

WASABI ACADEMY

Product Documentation



Veritas Backup Exec With Wasabi

Wasabi has been certified for use with Veritas Backup Exec. [Veritas Backup Exec](#) is a fast, cost-effective, unified backup and recovery solution for cloud-ready organizations.

For more information regarding Backup Exec-Wasabi support, please refer to Backup Exec [HCL](#).

To use this product with Wasabi, please follow the instructions below.

Please Note: *The data restoration process is handled by your specific backup software application. As there are many potential variables that will affect your unique environment, it is strongly recommended that you seek the guidance of your backup software's technical support team in the event that you encounter difficulty, or have application-specific inquiries.*

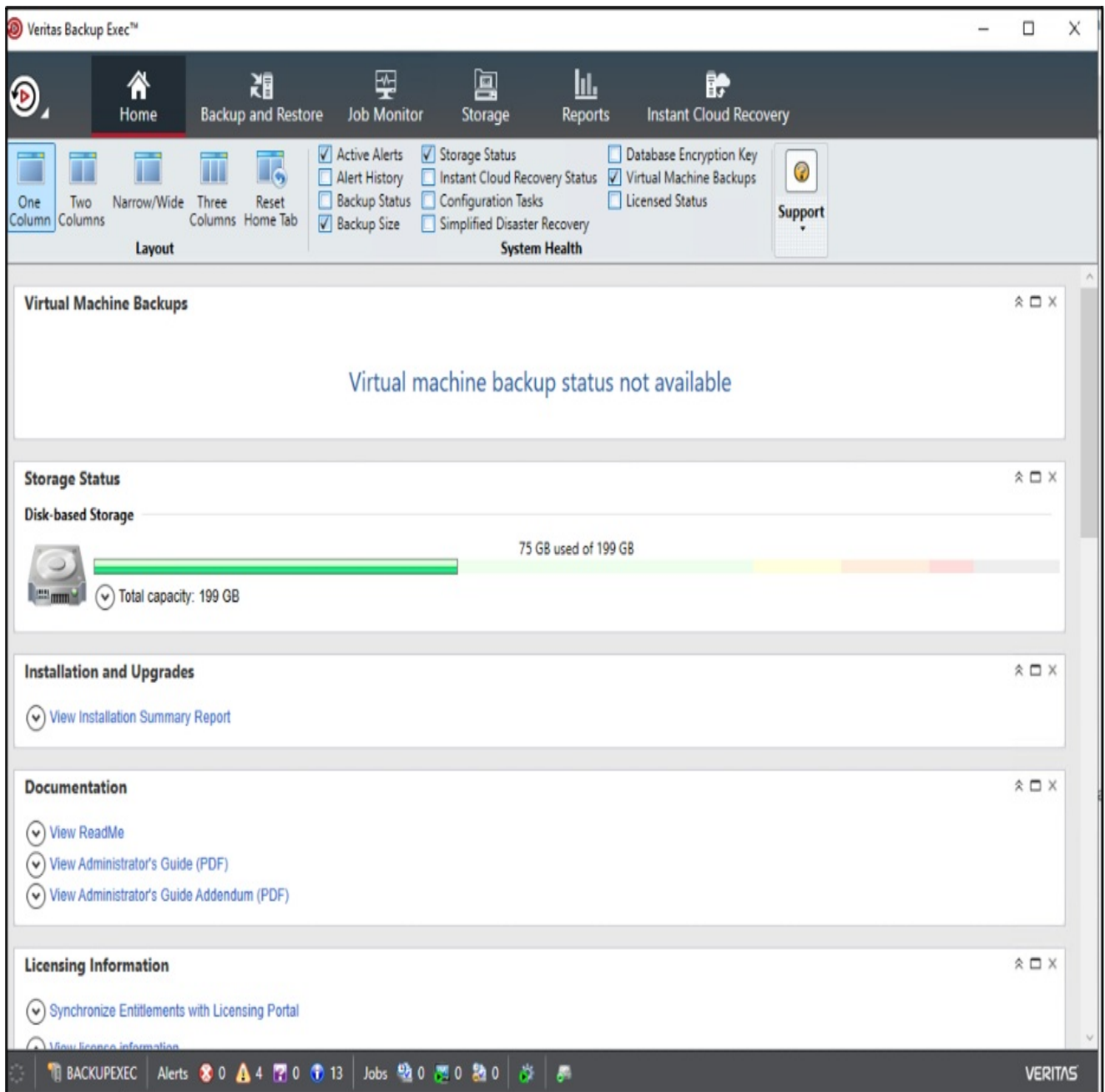
1. Prerequisites

- Operational Backup Exec v22 and above
- An active Wasabi account
- A bucket created in the Wasabi account

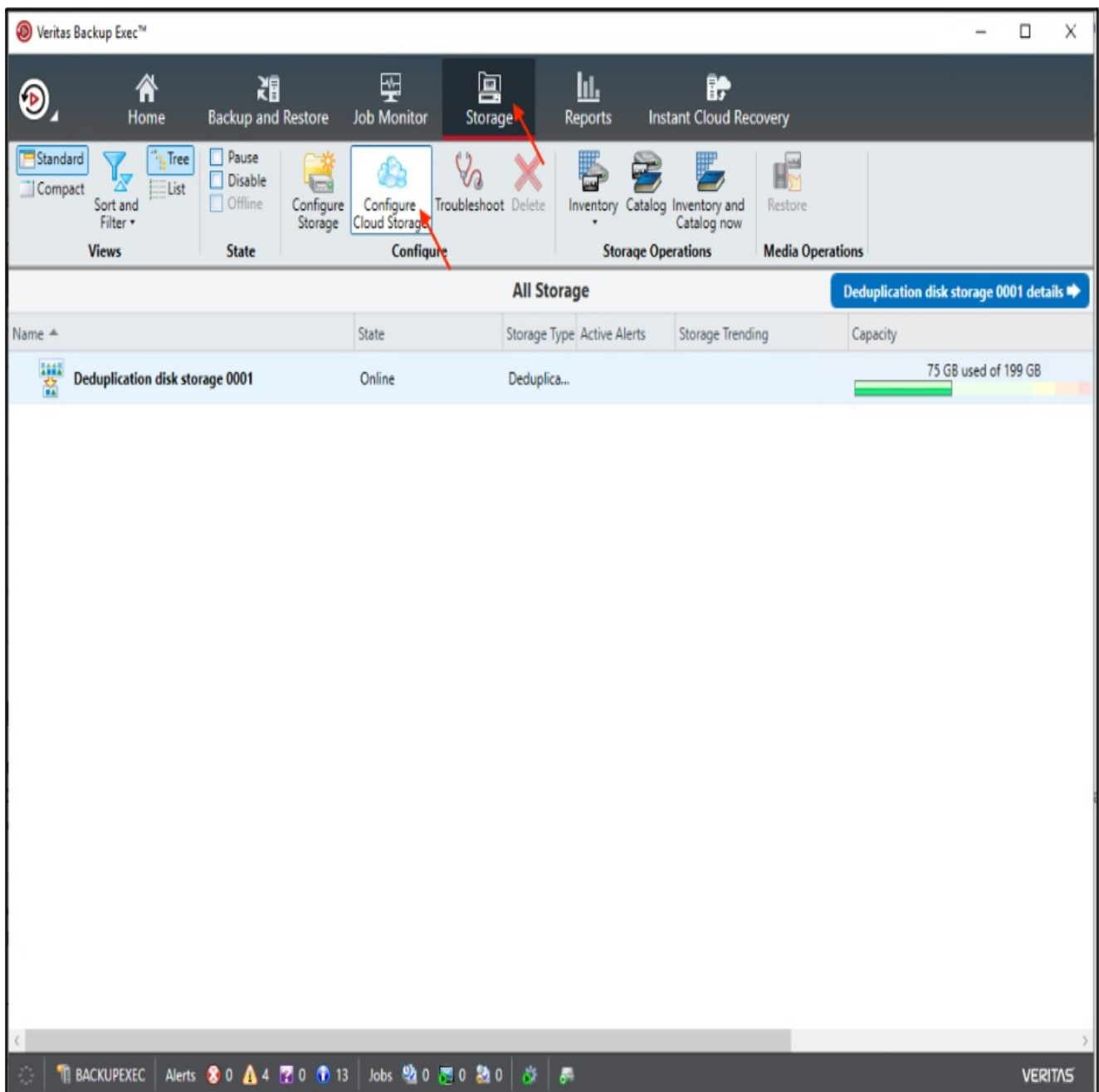
Note: *To configure Wasabi for previous Backup Exec versions (v20.4 and above) please click [here](#).*

2. Configure Wasabi as Cloud Storage Server

2.1. Log in to Backup Exec.



2.2. Navigate to the Storage tab. Click on "Configure Cloud storage".



2.3. In the Configure storage dialog box, provide a name for the cloud storage and click "Next".

Configure storage on BACKUPEXEC

What name and description do you want to use for the cloud storage device?


Name:

Description:

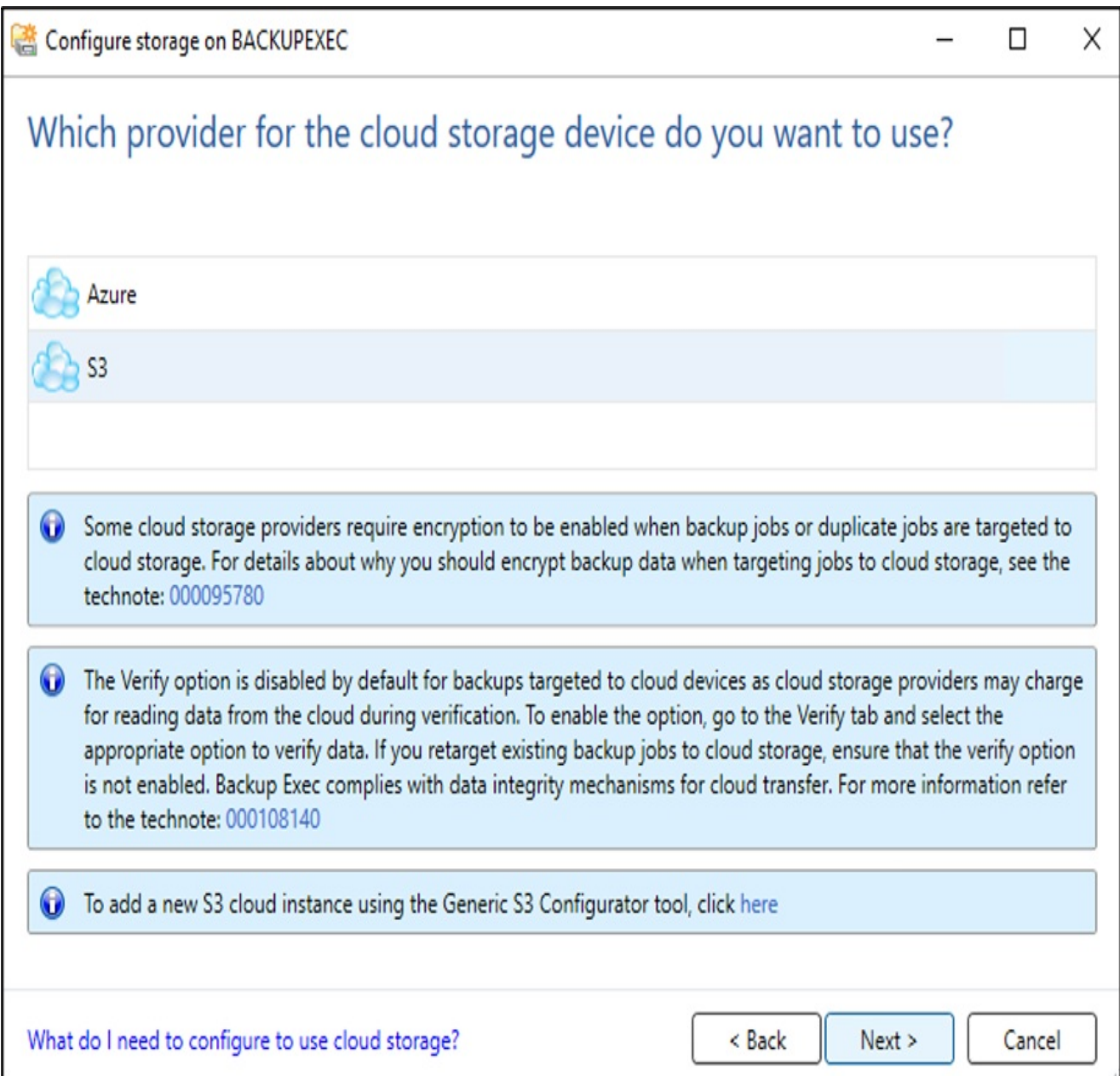
Enable deduplication to cloud storage

Enable encryption

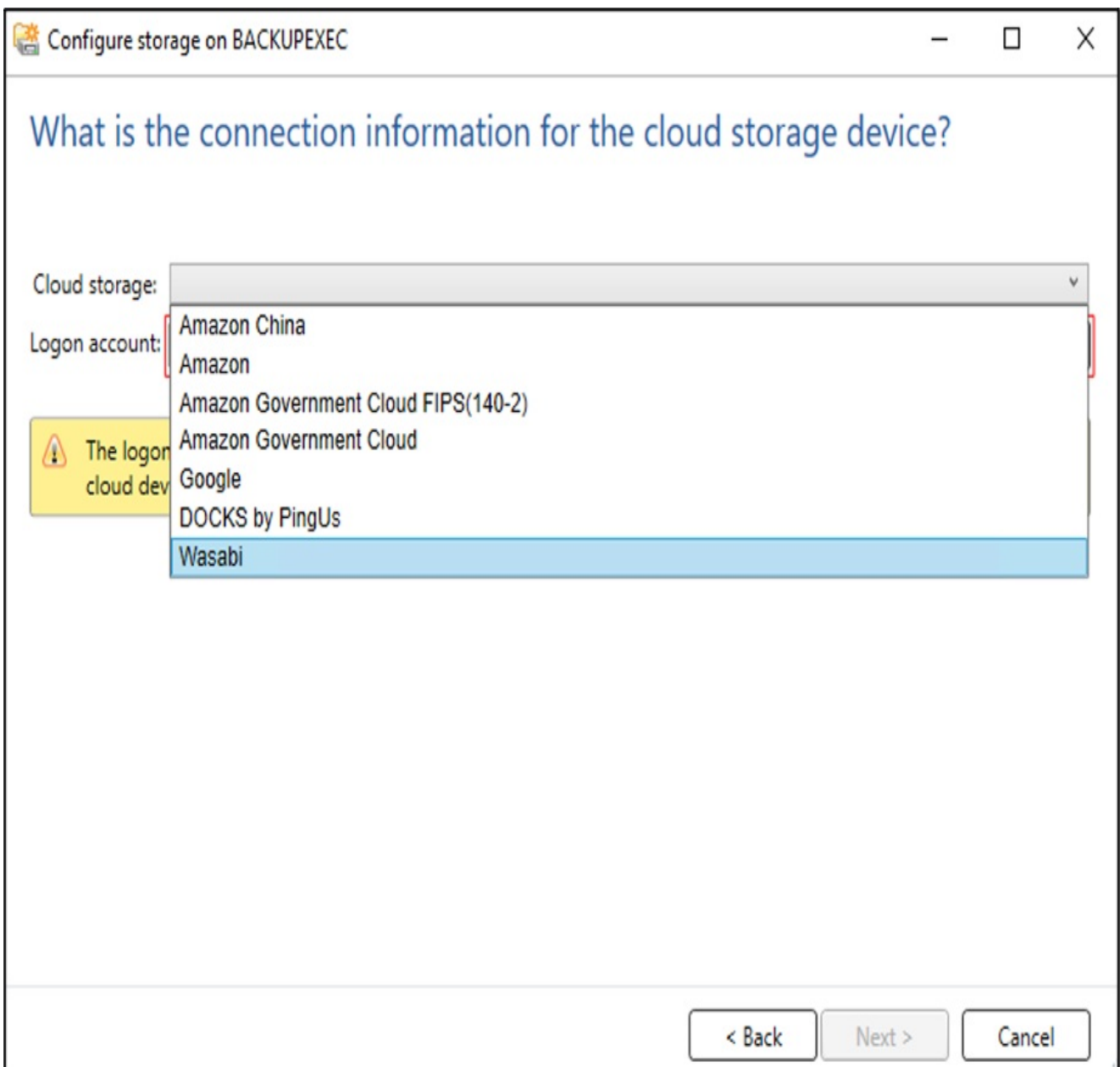
I want to import an existing Cloud Deduplication Storage

 Select "Enable deduplication to cloud storage" option to use Backup Exec Cloud Deduplication.

2.4. Select "S3" for the cloud storage device provider and click "Next".

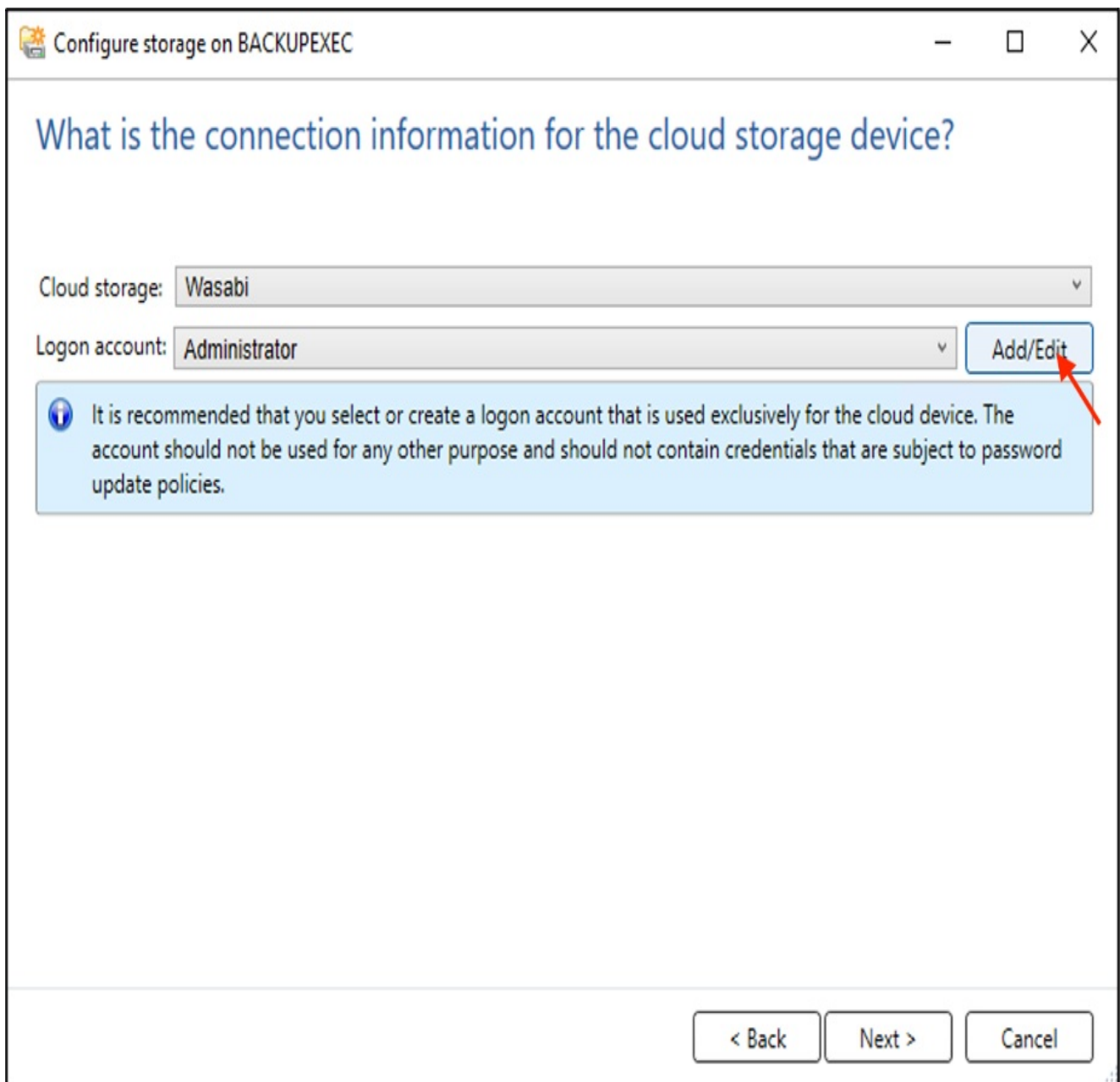


2.5. Select "Wasabi" from the Cloud storage dropdown menu.

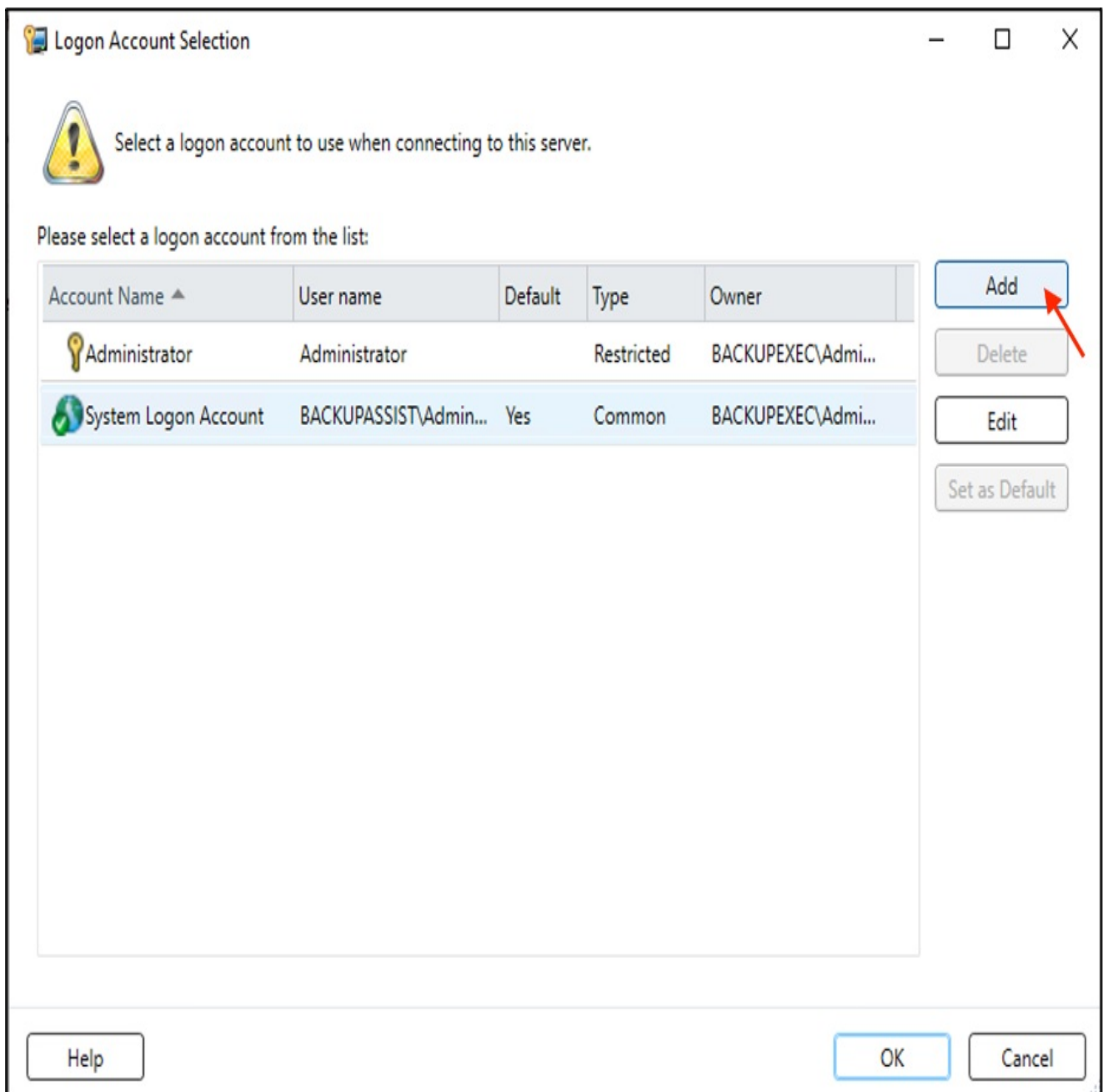


Note: If you do not have Wasabi listed as an option, please follow the steps in the [Appendix - Adding support for Wasabi](#).

2.6. To add your Wasabi logon account details, click on "Add/Edit".




2.7. In the Logon Account Selection window, click "Add".



2.8. In the Add Logon Credentials dialog box, provide the following details and click "OK".

- User name - Access Key of the Wasabi account
- Password - SecretAccess Key
- Account name - provide a descriptive account name to identify the account

 Add Logon Credentials X

Account credentials


User name:

Password:

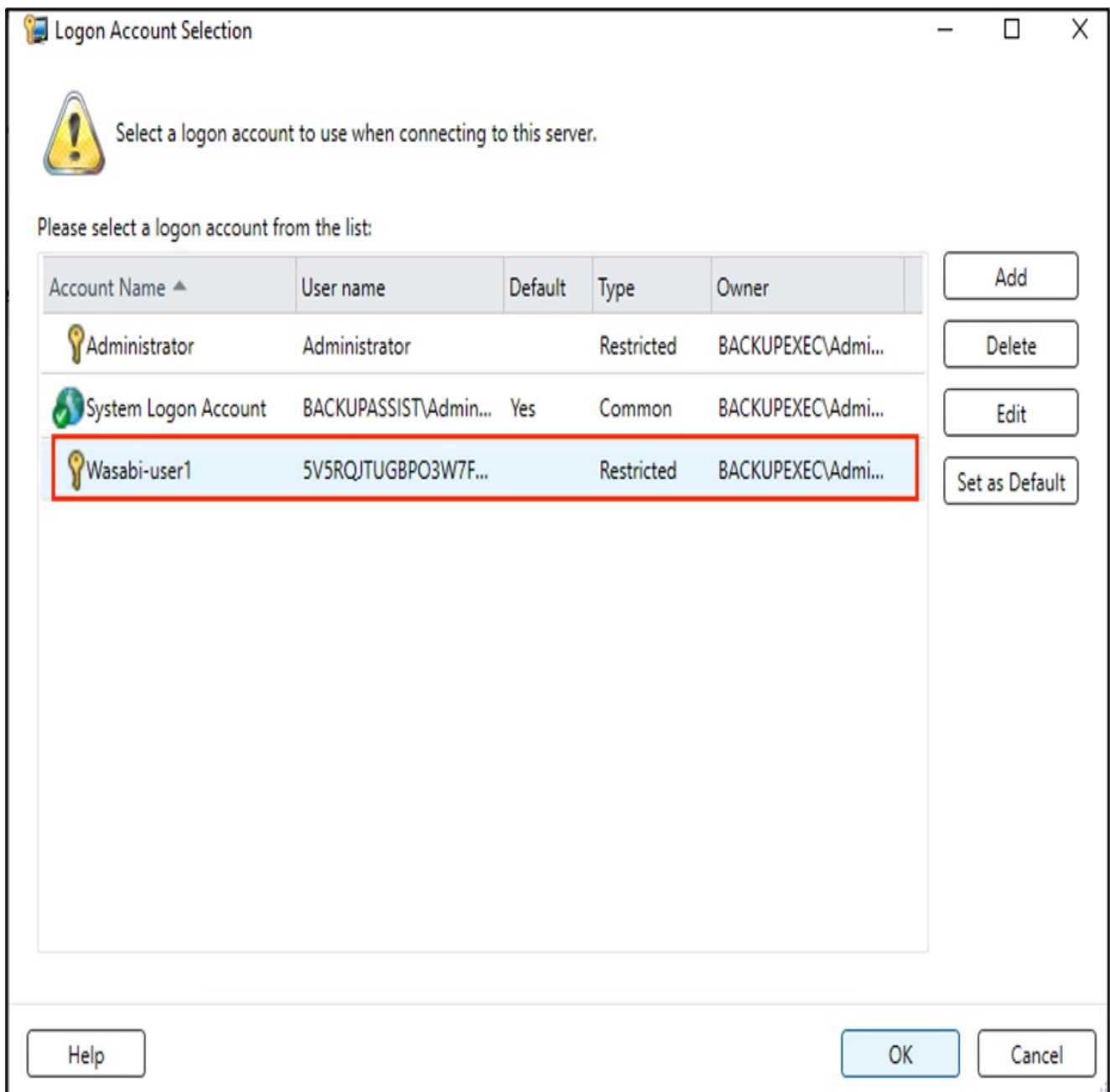
Confirm password:

Account name:

Notes:

 This is a restricted logon account.
 This is my default account.

2.9. In the Logon Account Selection dialog box, select the account from the list and click OK.




2.10. Confirm the logon account and click "Next".

Configure storage on BACKUPEXEC

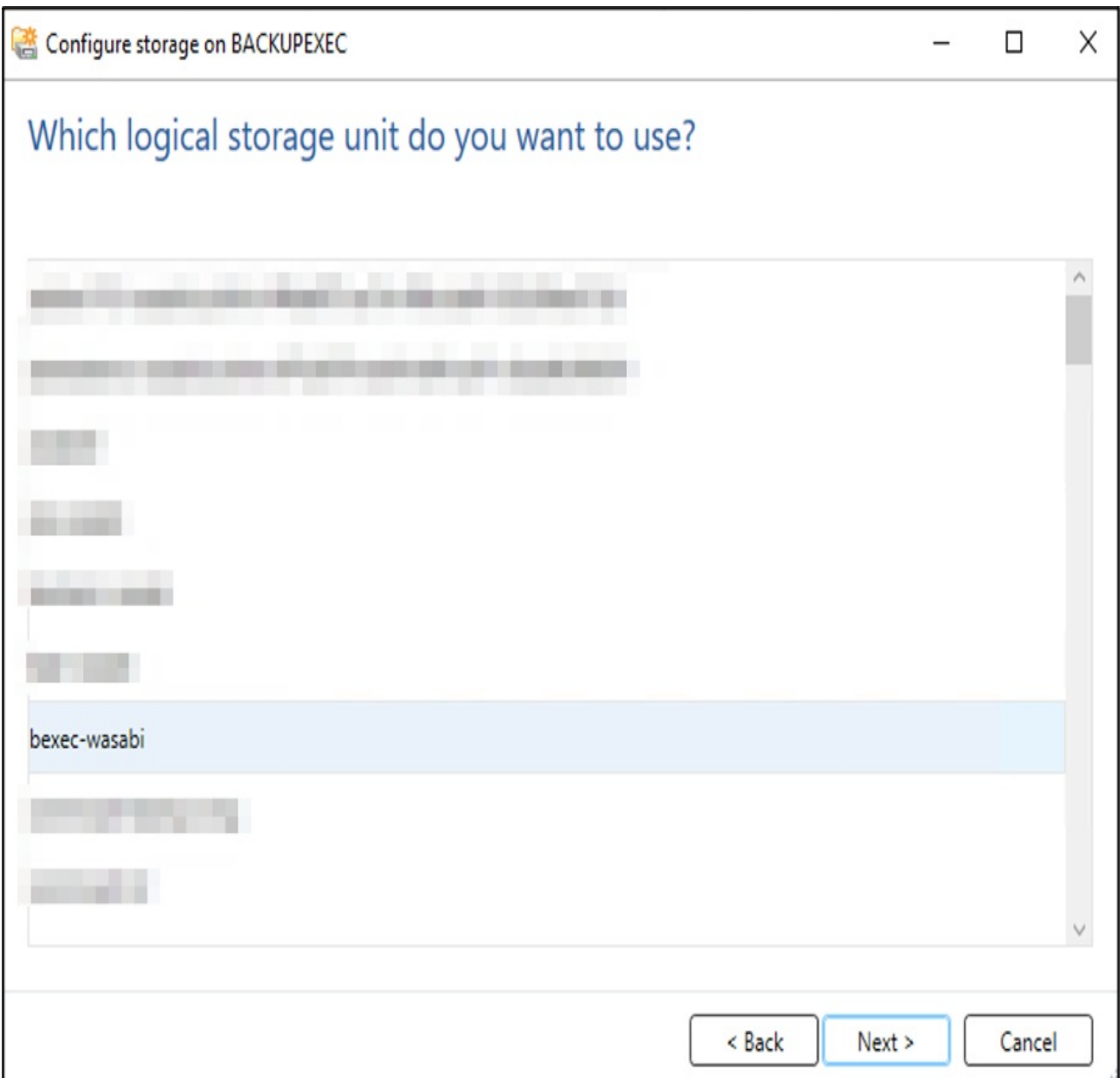
What is the connection information for the cloud storage device?

Cloud storage:

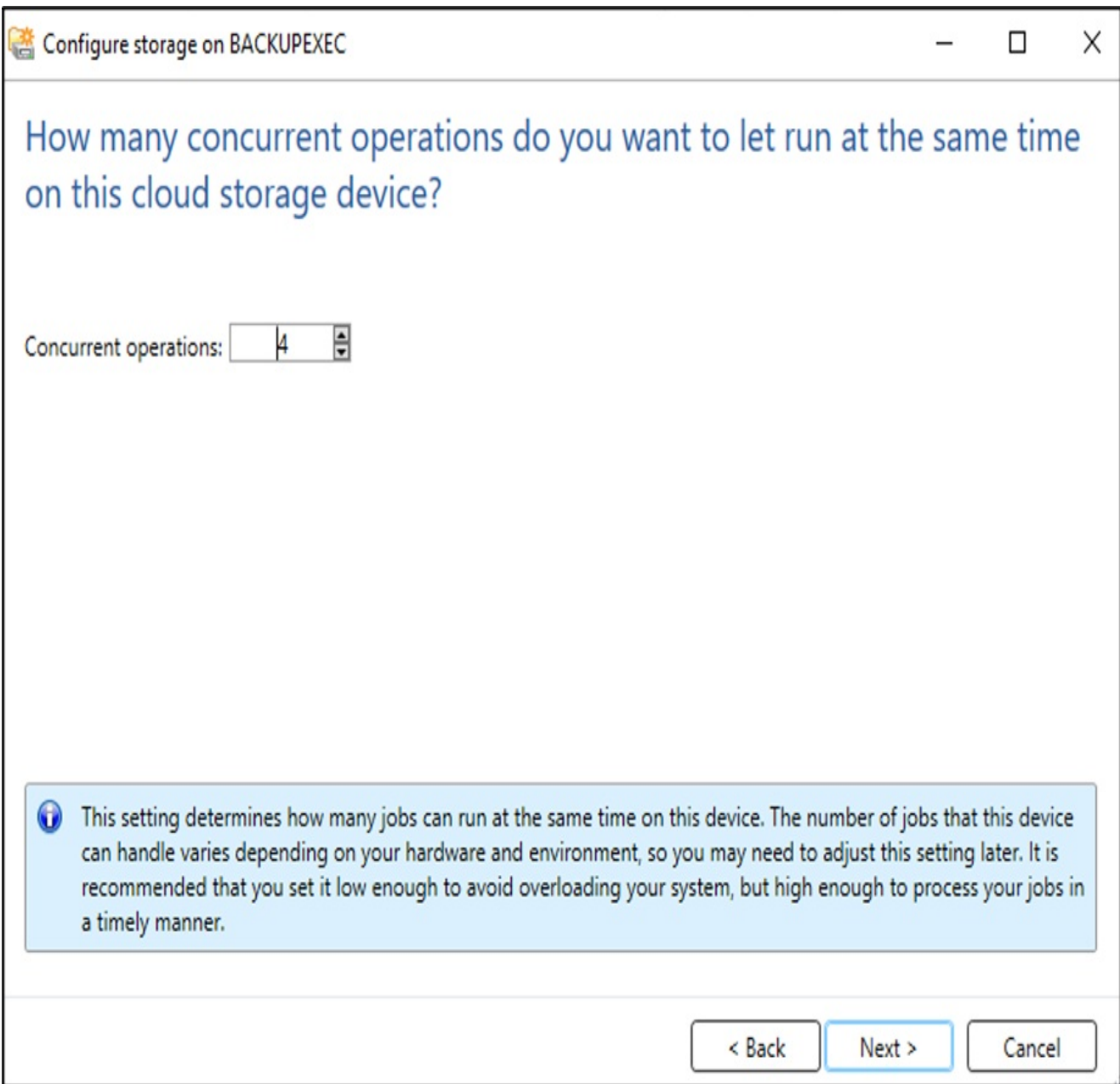
Logon account:

 It is recommended that you select or create a logon account that is used exclusively for the cloud device. The account should not be used for any other purpose and should not contain credentials that are subject to password update policies.

2.11. Select the required bucket from the list and click "Next".



2.12. Configure the desired number of concurrent operations and click "Next".



2.13. Review the configuration summary and click "Finish".

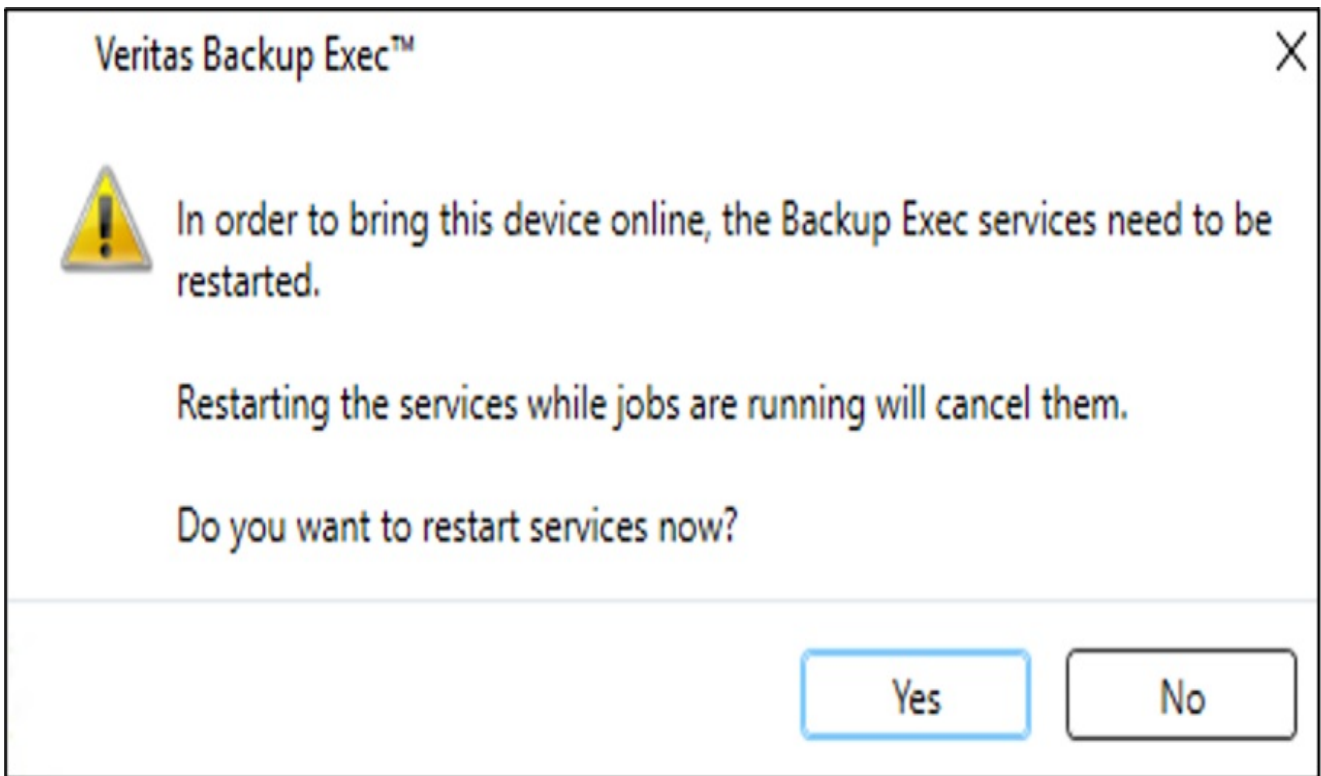
Configure storage on BACKUPEXEC

Storage configuration summary

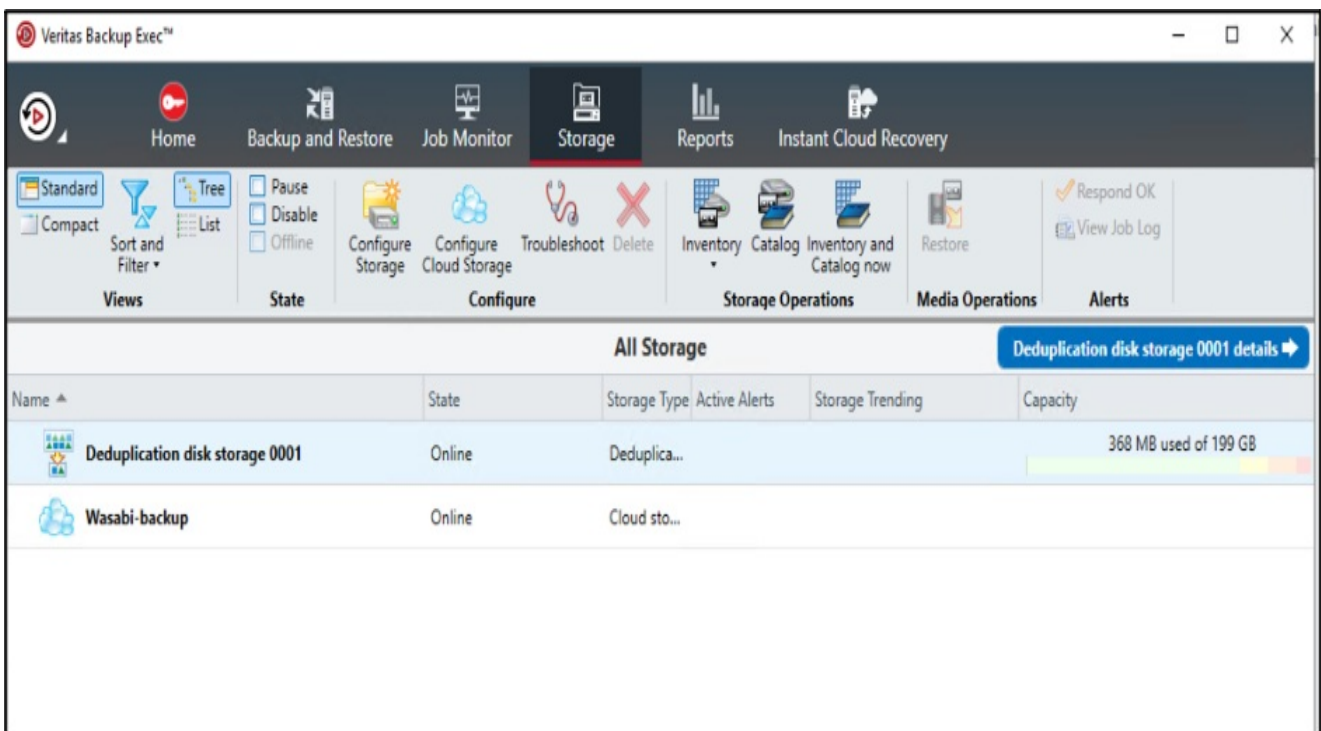
Name and description for the cloud storage device	
Name:	Wasabi-backup
Description:	
Provider name	
Cloud provider name:	S3
Connection information	
Cloud server name:	wasabi:wasabi.com
Logon account:	Wasabi-user1
Bucket / Storage container	
Storage location:	bexec-wasabi
Number of concurrent operations allowed	
Concurrent operations:	4

< Back Finish Cancel

2.14. Click "Yes" to restart the Backup Exec services to provide the cloud storage online.

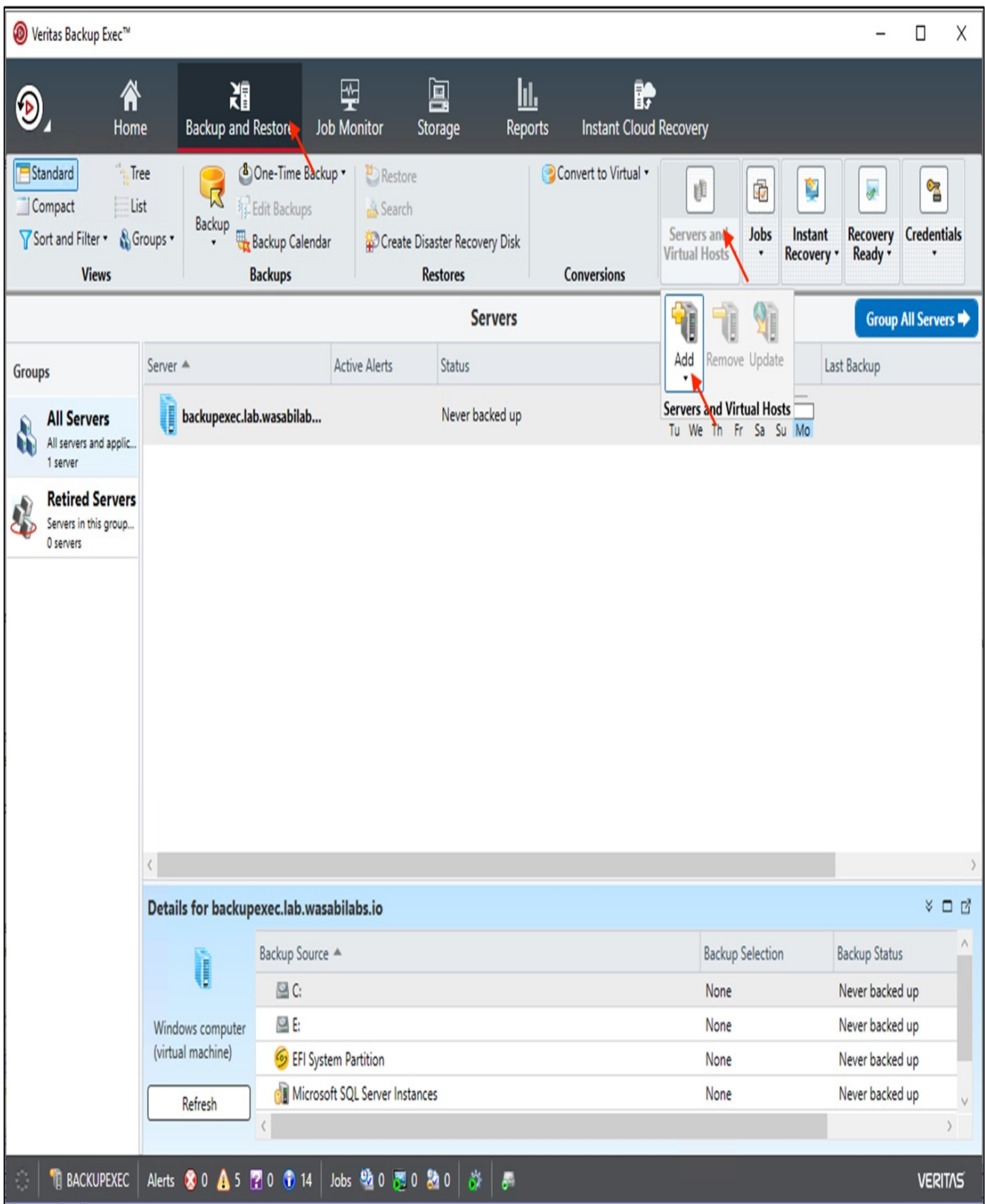


2.15. The new Wasabi cloud storage account is displayed in the Storage tab and is ready to use.

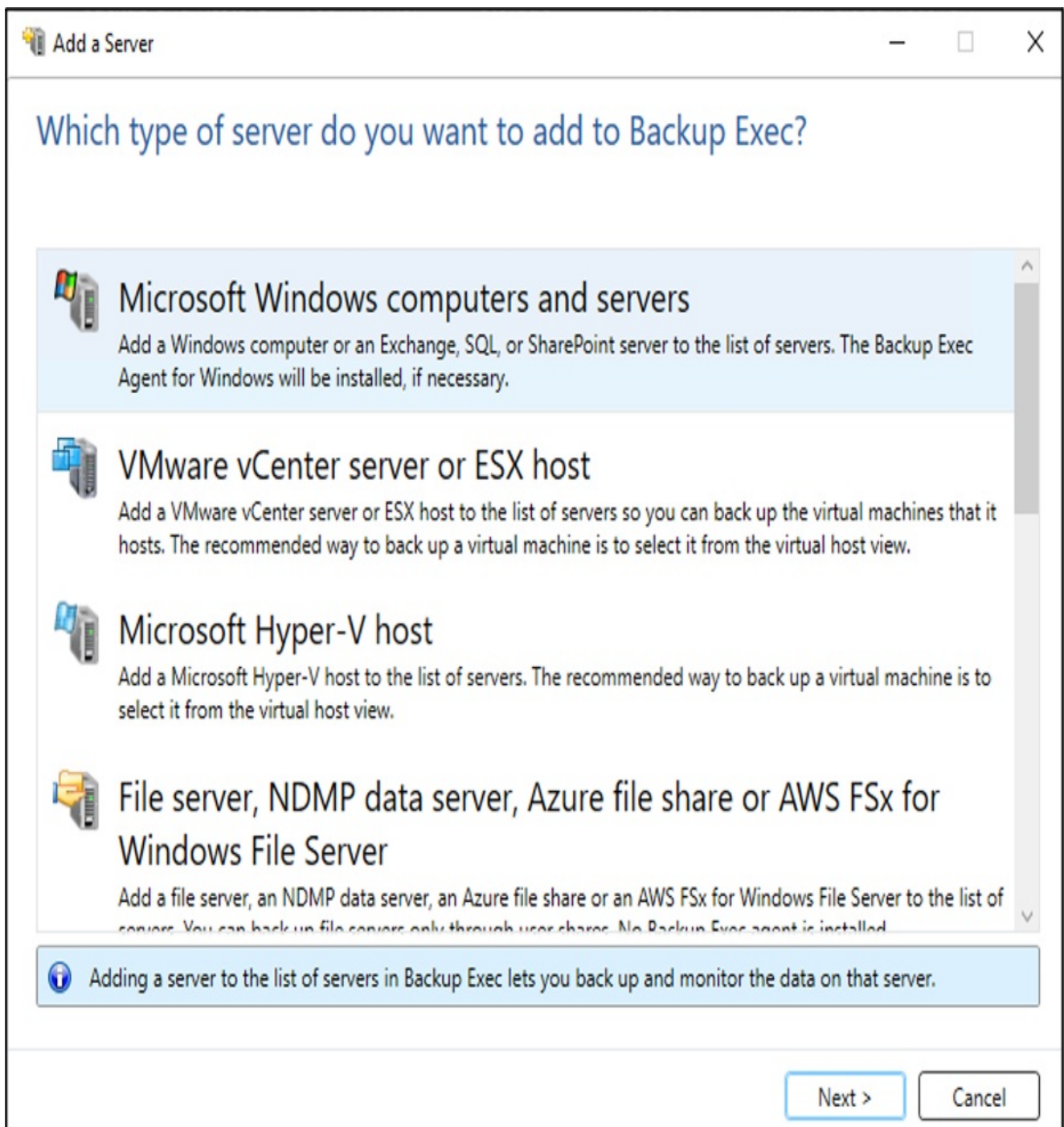


3. Install Veritas backup exec agent and add server

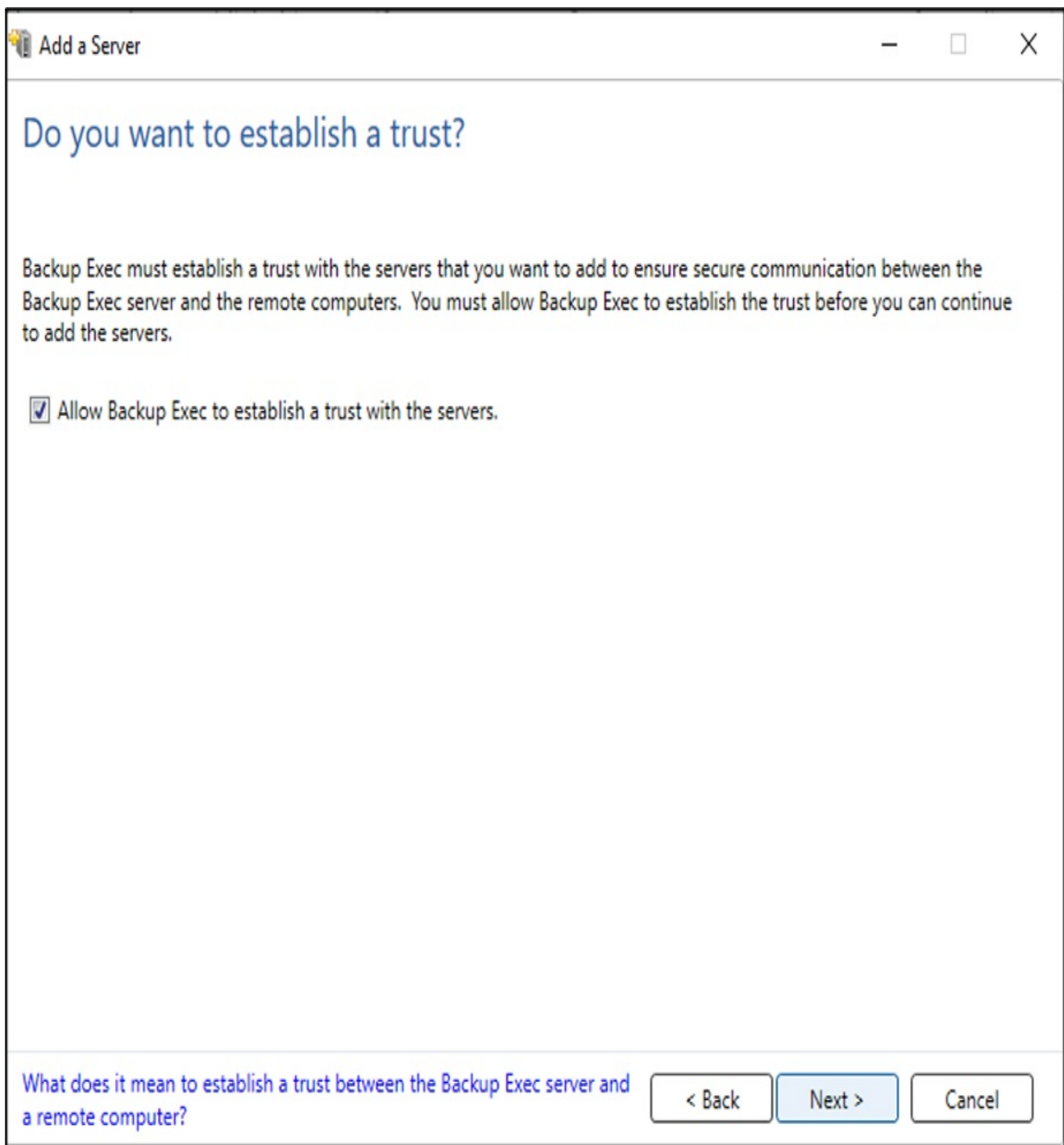
3.1. Navigate to the "Backup and Restore" tab. Click "Servers and Virtual Hosts" and click "Add" to add a client to backup.



3.2. Choose the type of server infrastructure that needs to be backed up and click "Next".



3.3. Check "Allow Backup Exec to establish a trust with the servers" check box and click "Next".



3.4. Add servers with an associated "Logon Account" and Click "Next".

Add a Server

Which servers do you want to add?

Type the name of a server or the server's IP address or browse for any servers that you want to add:

Add

Browse

Server Name ▲	Logon Account
192.168.197.43	admin ▼

Delete

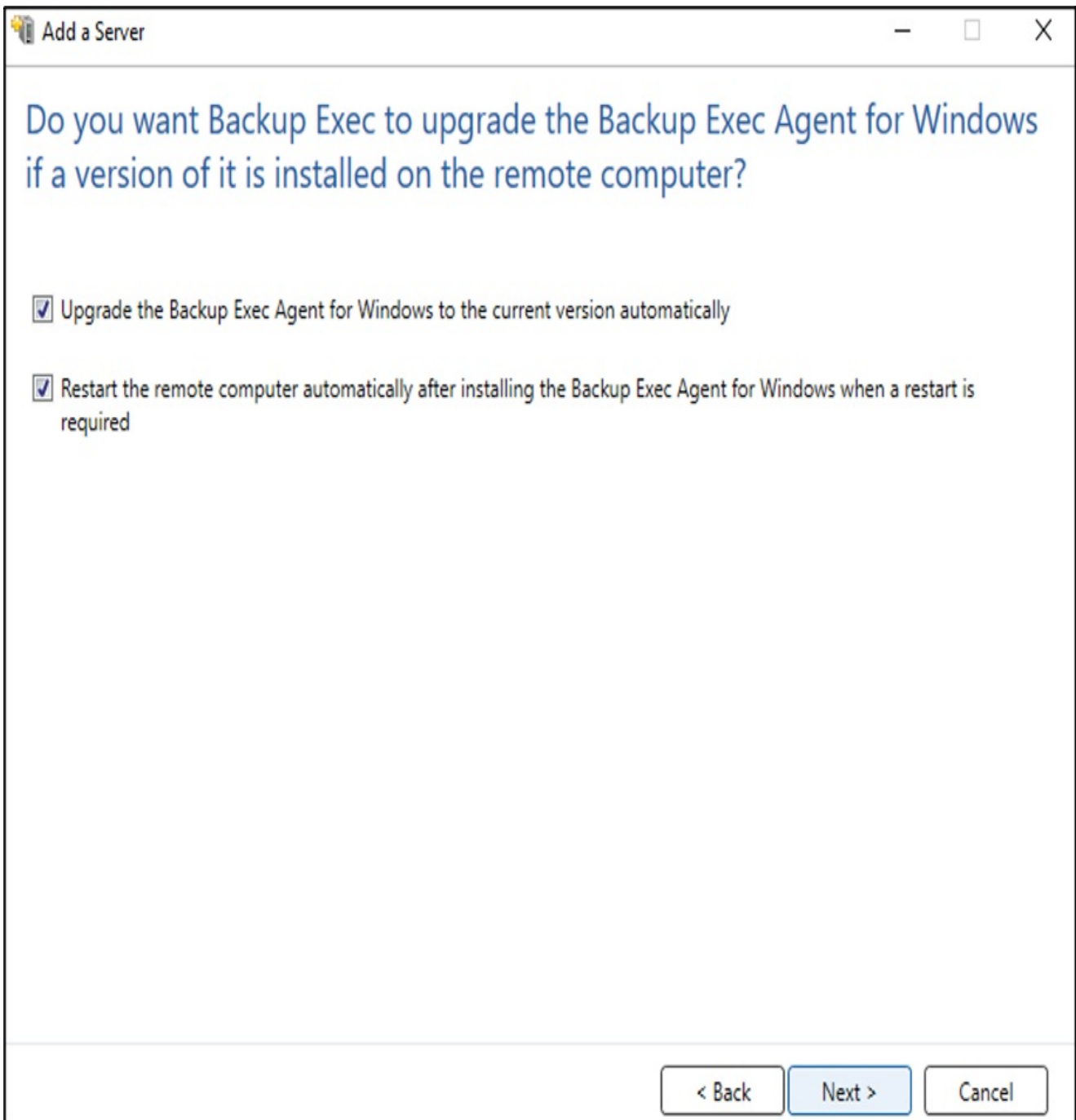
Apply to All

Always use IP address to connect to servers. Do not resolve IP addresses into fully qualified domain names.

[What are logon accounts?](#)

< Back Next > Cancel

3.5. Check both boxes to ensure that updated backup agent software has been installed and available to create backup and click "Next".



3.6. Review the configurations and click "Install".

Add a Server

Summary

Type of server to add
Microsoft Windows computers and servers

Establish trust
Yes

Servers to add

Server Name	Logon Account
192.168.197.43	admin

Always use IP address to connect to servers Yes

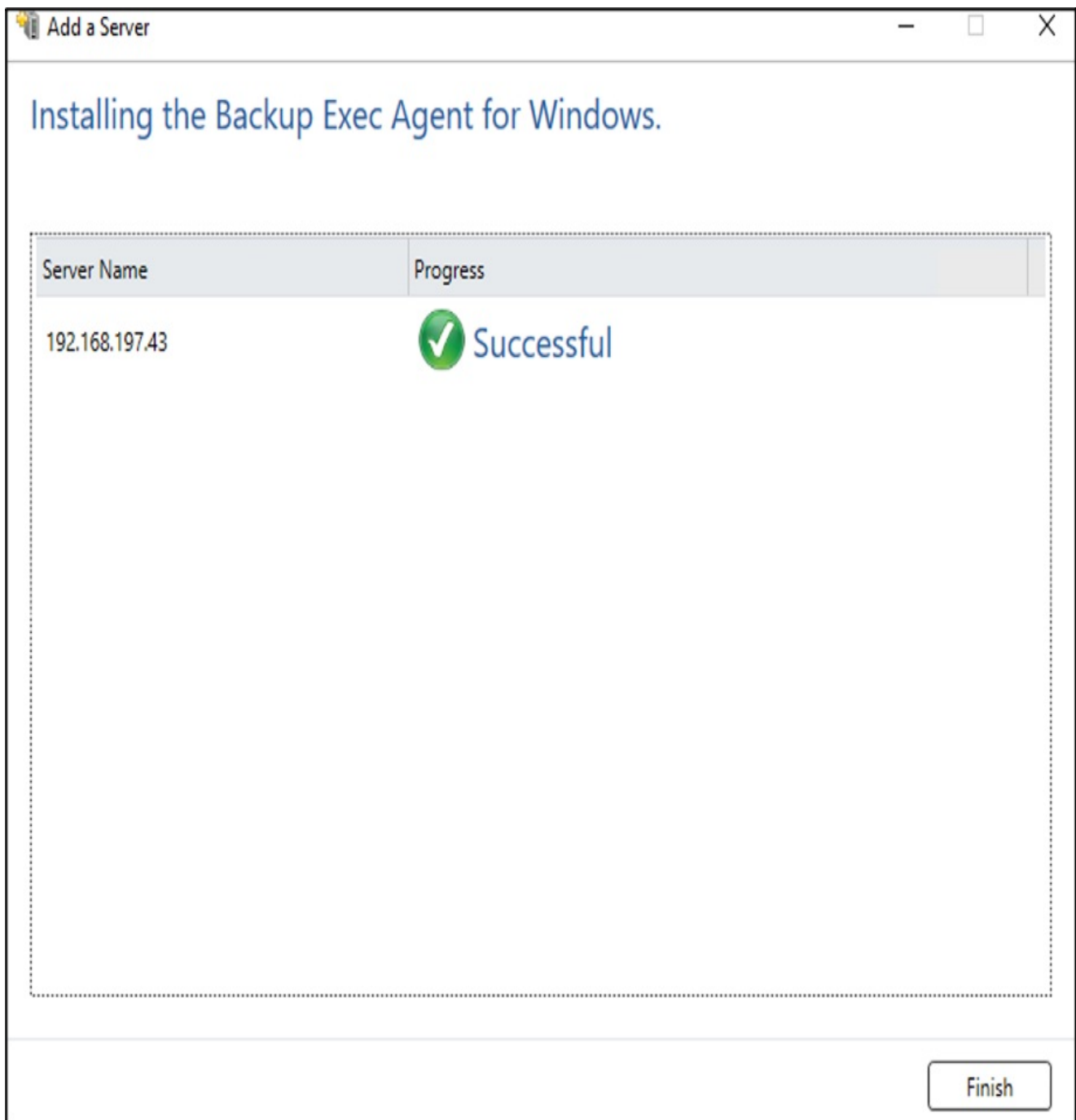
Install features

Upgrade the Backup Exec Agent for Windows to the current version automatically: Yes

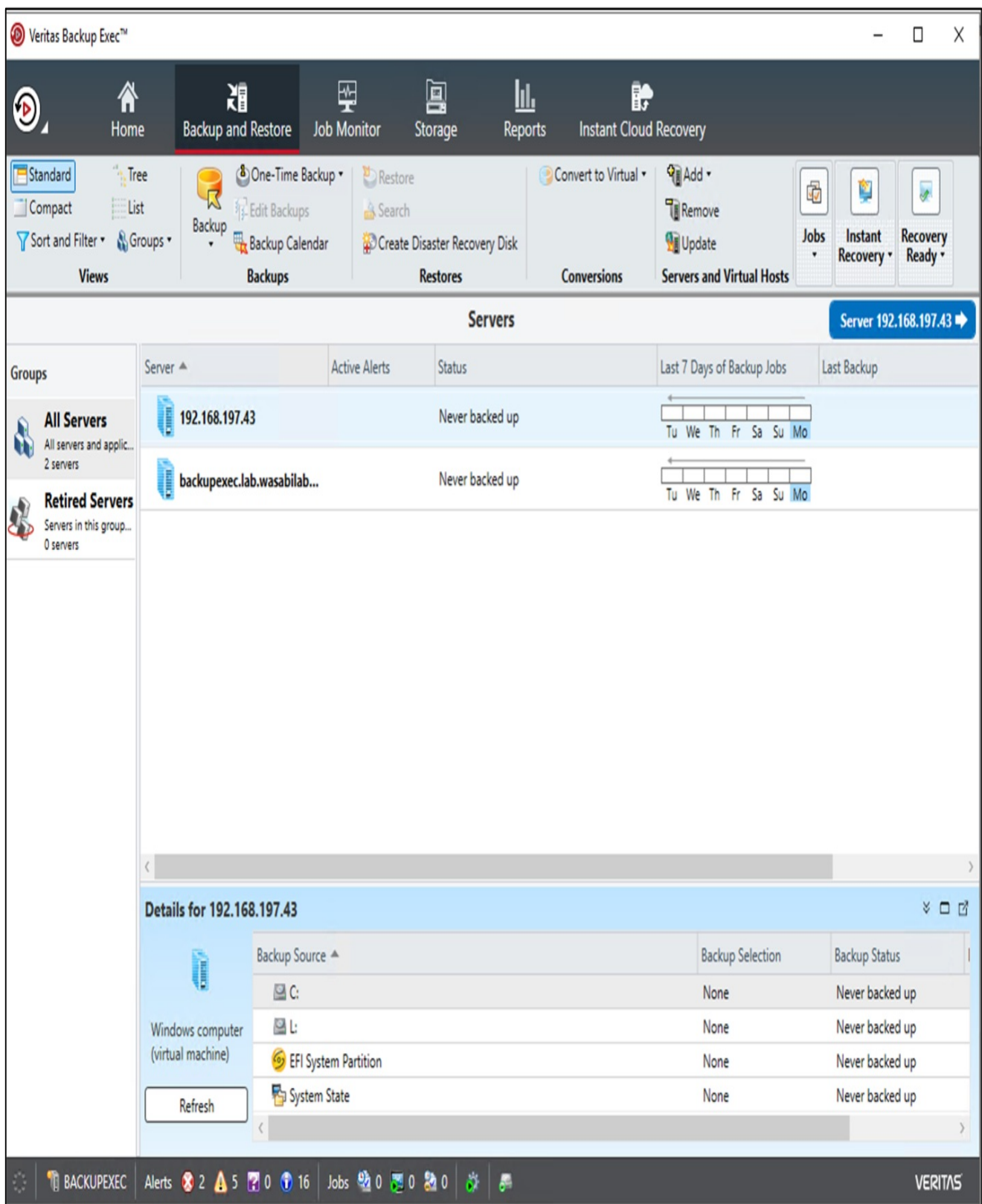
Restart the remote computer automatically after installing the Backup Exec Agent for Windows when a restart is required: Yes

< Back Install Cancel

3.7. Veritas Backup Exec will verify appropriate packages have been configured and installed on your remote server and complete successfully.

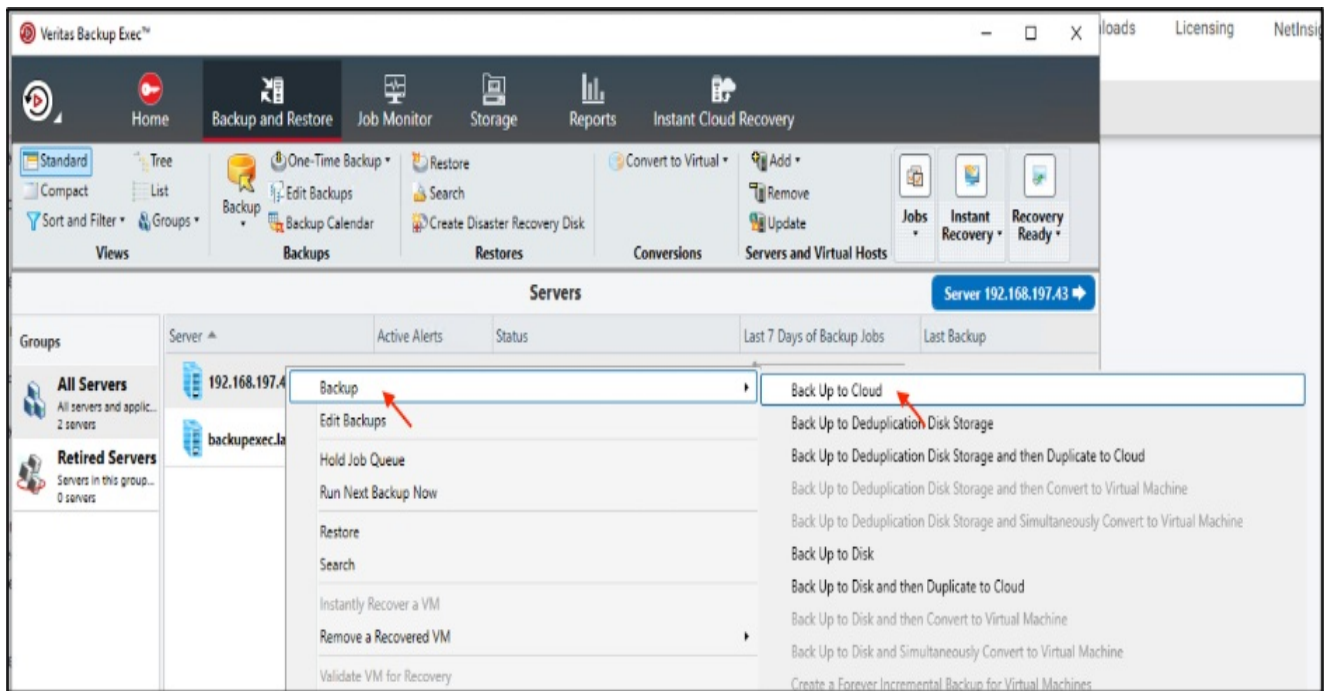


3.8. Once the agent software is successfully installed - the server will be available to be backed up.

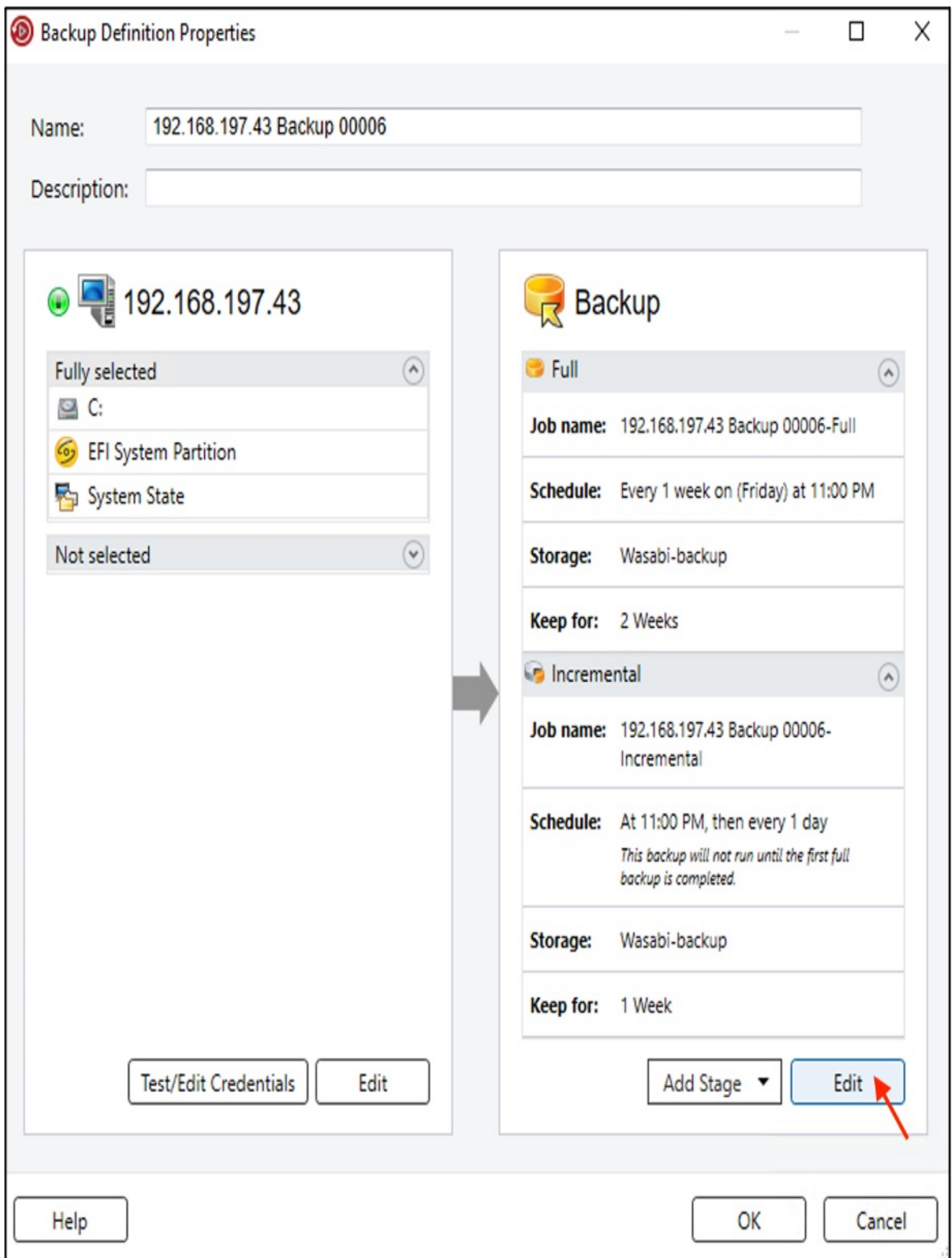


4. Create a backup job

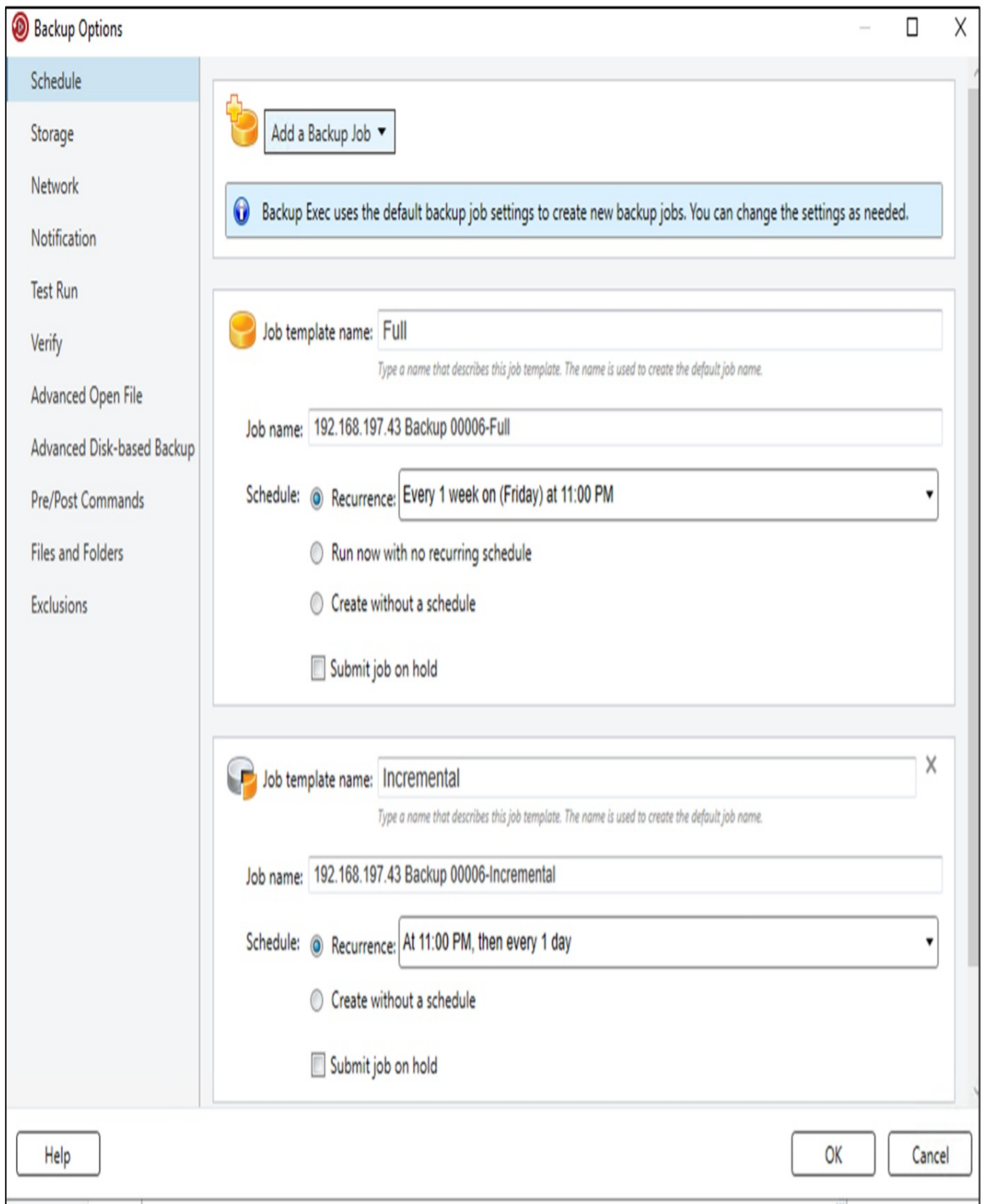
4.1. Right-click on the server that needs to be backed up and choose "Back Up to Cloud".



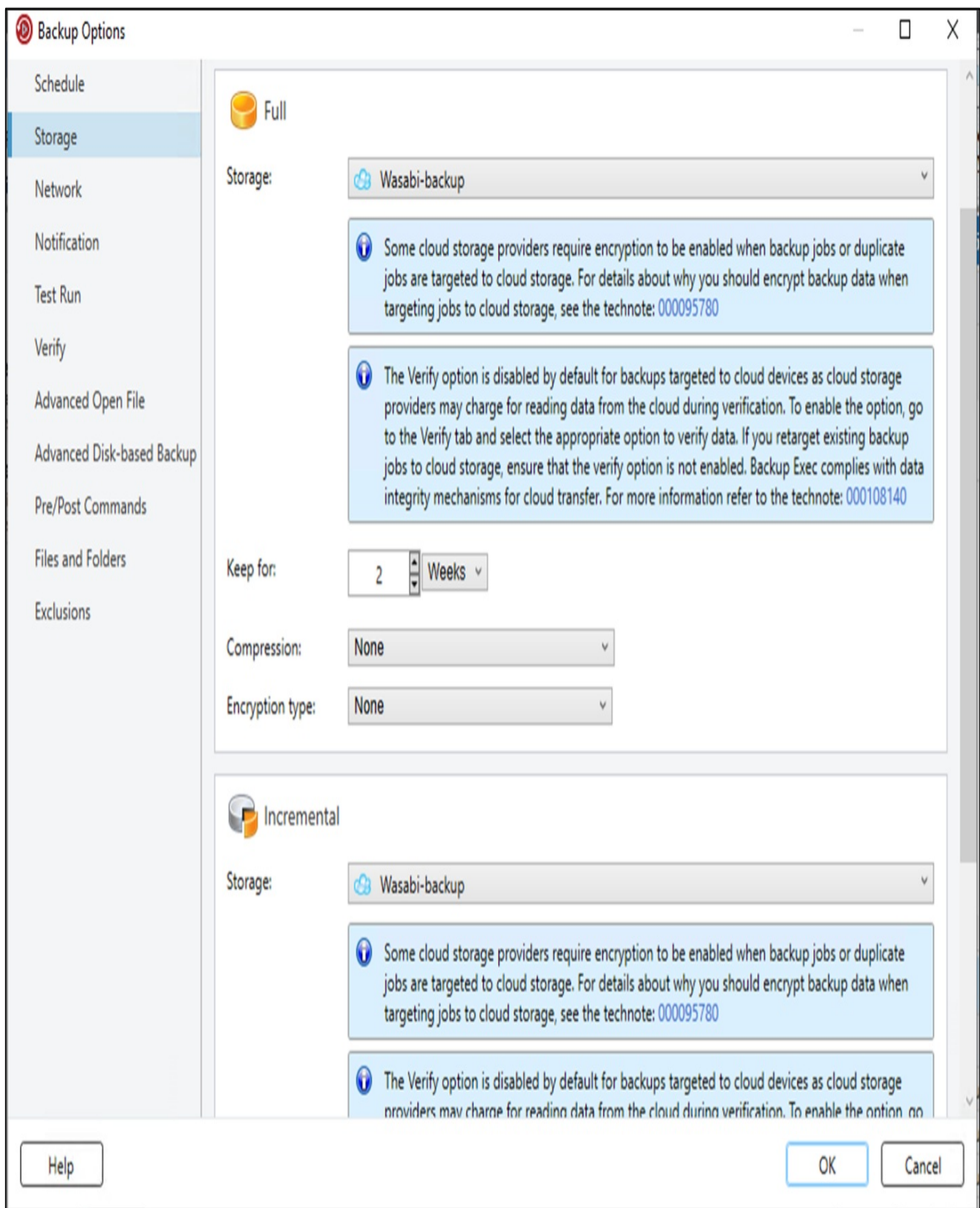
4.2. Click "Edit" and choose the type of backup, backup certain folders, application data or entire VM.



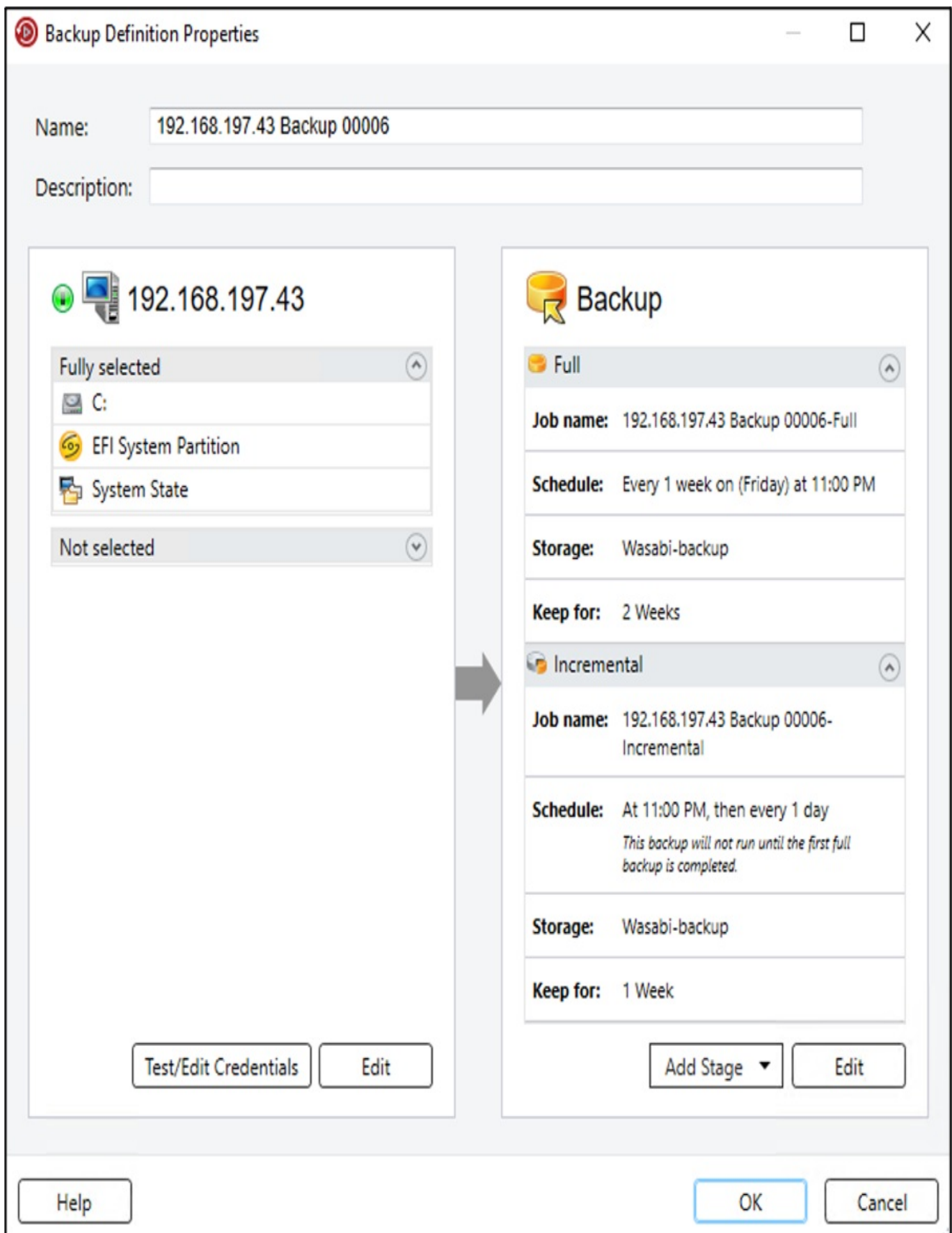
4.3. Under the "Backup" section and choose when the backup needs to run, either run it once or create a schedule based on the requirement.



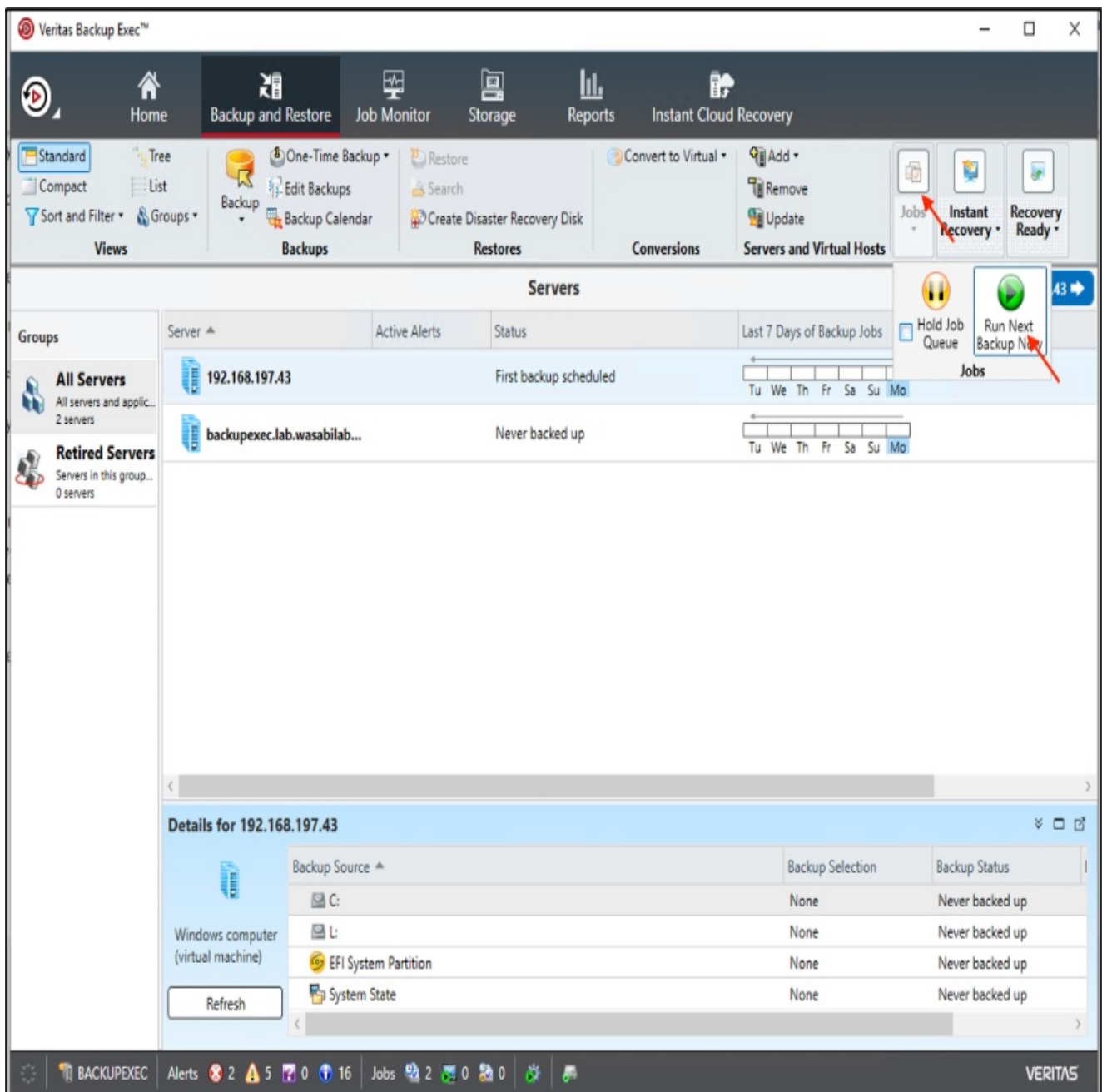
4.4. Click on "Storage", choose the Wasabi cloud storage account to store your backup and click "OK" in the Full and Incremental backup sections.



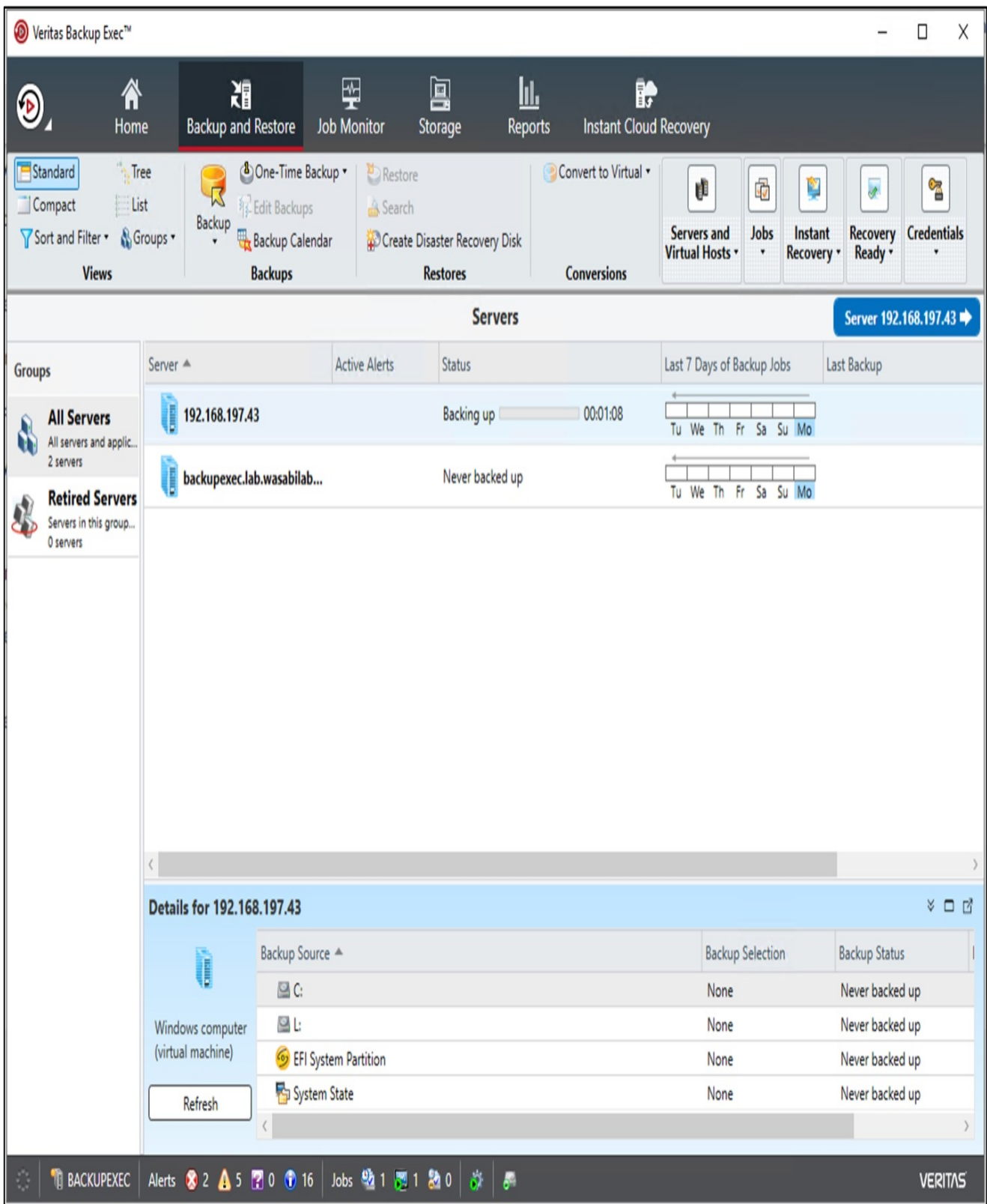
4.5. Click "OK" in the Backup Definition Properties.



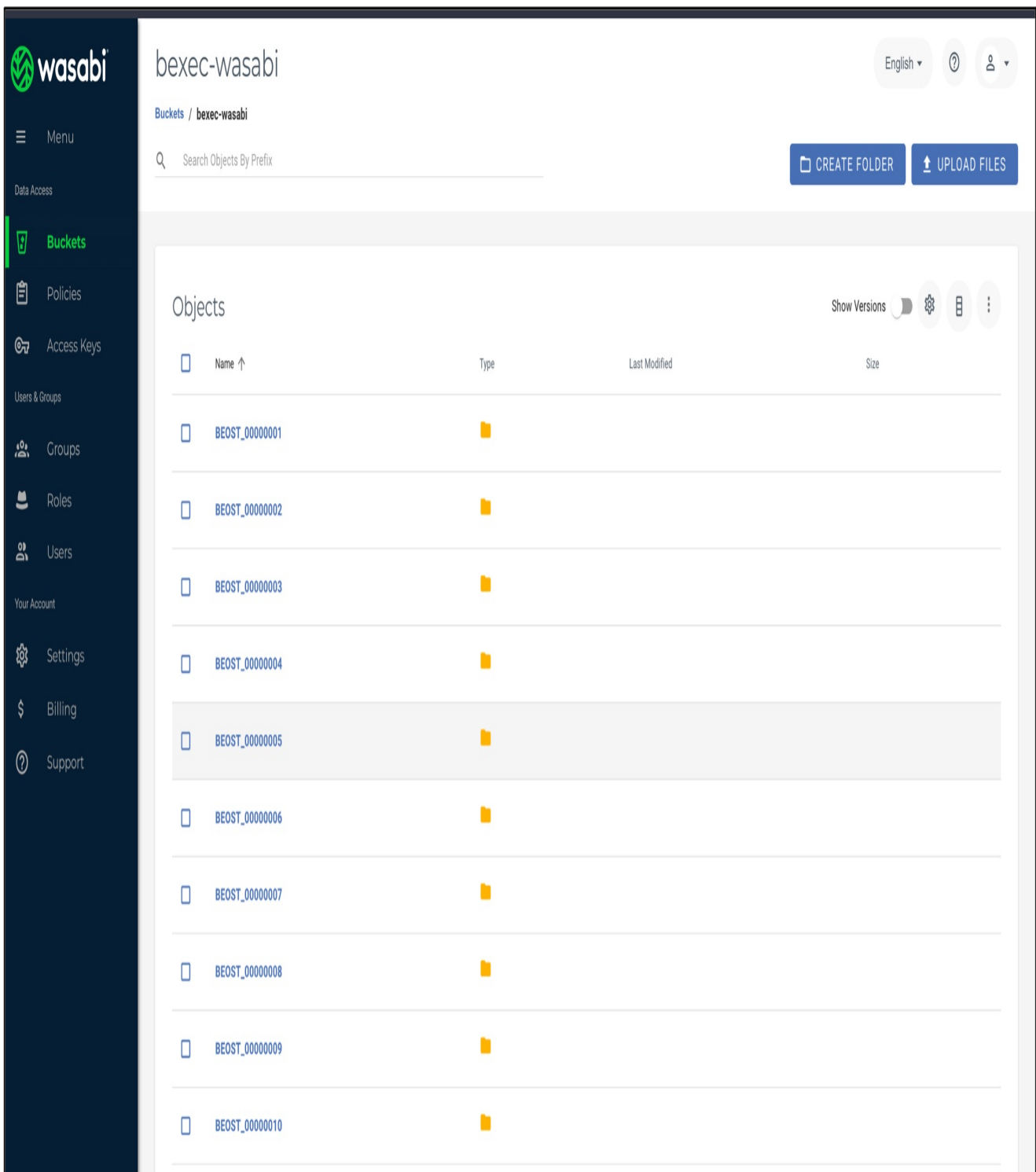
4.6. To run a manual backup, select the required server. Click on "Jobs --> Run Next Backup Now".



4.7. The Backup process starts displaying the progress.



4.8. The backup job will create a number of folders in your bucket on Wasabi, for example, you might see a structure as shown below.



5. Immutability

Starting in Version 22.2 or later the ability to backup to Object Lock enabled/Immutable bucket is now supported for Wasabi.

For more detail please refer to the [Hardware and Cloud Storage Compatibility List](#)

To create an Object Lock Volume you will need to utilize the MSDP Cloud Admin command line tool.

5.1 Run and Open Command Prompt (CMD) as an Administrator

Administrator: Command Prompt

```
Microsoft Windows [Version 10.0.17763.737]
(c) 2018 Microsoft Corporation. All rights reserved.

C:\Users\Administrator>
```

5.2 Navigate to the installation of Veritas Backup Exec folder.

Plaintext	Copy
<pre>cd "Program Files\Veritas\Backup Exec"</pre>	

Administrator: Command Prompt

```
Microsoft Windows [Version 10.0.17763.737]
(c) 2018 Microsoft Corporation. All rights reserved.

C:\Users\Administrator>cd "c:\Program Files\Veritas\Backup Exec
c:\Program Files\Veritas\Backup Exec>
```

5.3 Run the following commands:

Input your Wasabi Access Key and Secret key between in place of and

PowerShell	Copy
<pre>set MSDPC_ACCESS_KEY= set MSDPC_SECRET_KEY= set MSDPC_PROVIDER=wasabi set MSDPC_ENDPOINT=s3.us-east-2.wasabisys.com set MSDPC_REGION=us-east-2</pre>	

Note: This configuration example discusses the use of Wasabi's us-east-2 storage region. To use other Wasabi storage regions, please use the appropriate Wasabi service URL as described in our [Wasabi Service URLs](#).

5.4 Run the following command to create your object lock bucket and volume:

--**bucket** is used to specify the bucket name

--**volume** is used to specify the volume name (use the same name while configuring the storage in backup exec)

--**mode** is used to specify the retention mode: COMPLIANCE or GOVERNANCE (Backup Exec supports only the GOVERNANCE mode.)

--**max** is used to specify the max lock duration: number plus 'D' or 'Y', such as 12Y means 12 years

--**min** value, -N value min lock duration in days 'D'/years 'Y', such as 12D means 12 days

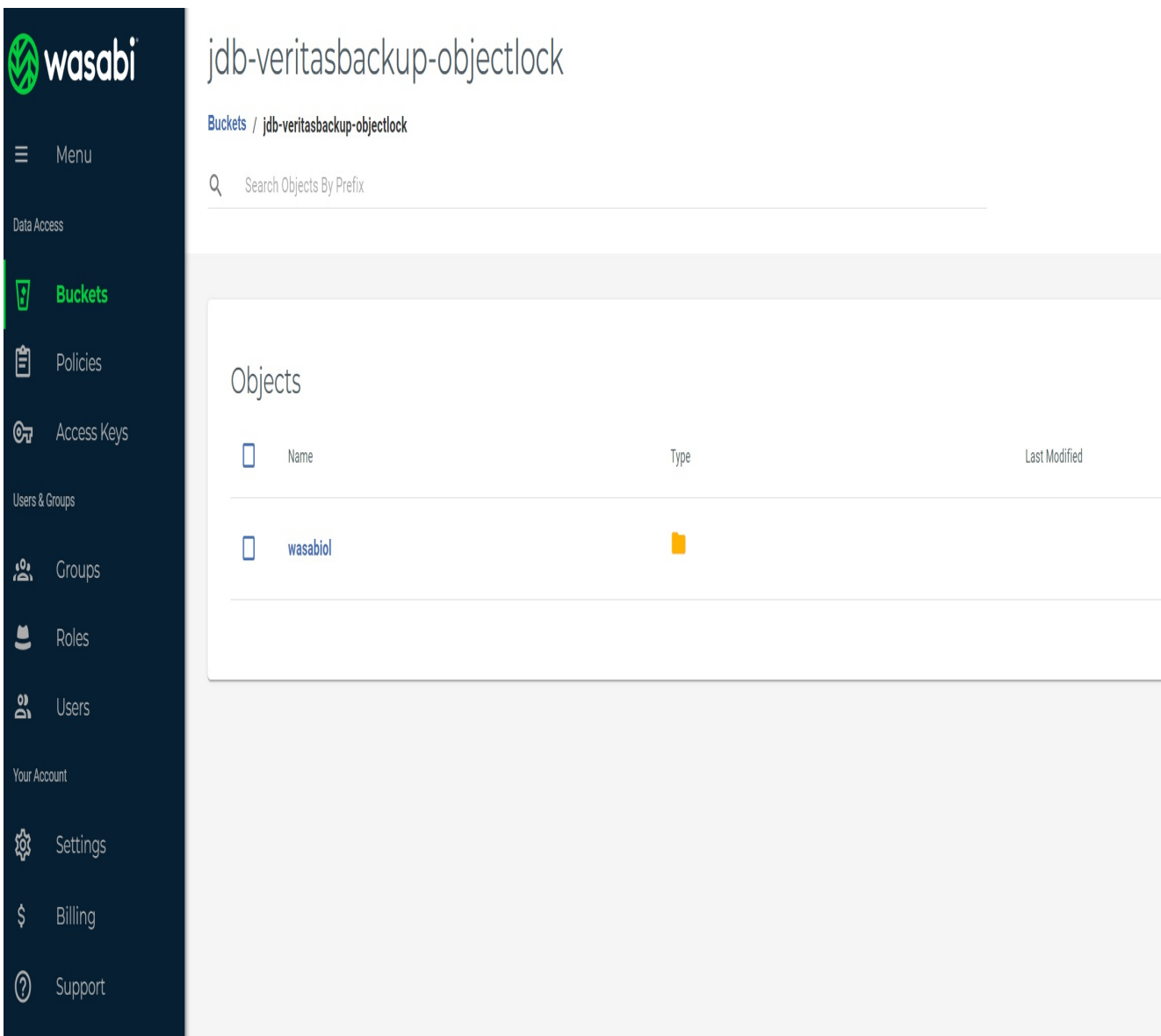
--**live** is used to specify the time frame for which the volume will be enabled for retention lock i.e. its live until date (example, 2021-08-18, format:'YYYY-MM-DD', clock is set:'00:00:00', timezone is set:'UTC')

Plaintext	Copy
<pre>msdpclutil.exe create --bucket veritasbackup-objectlock --volume objectlock --mode COMPLIANCE --min 1D --max 3D --live 2023-06-30</pre>	

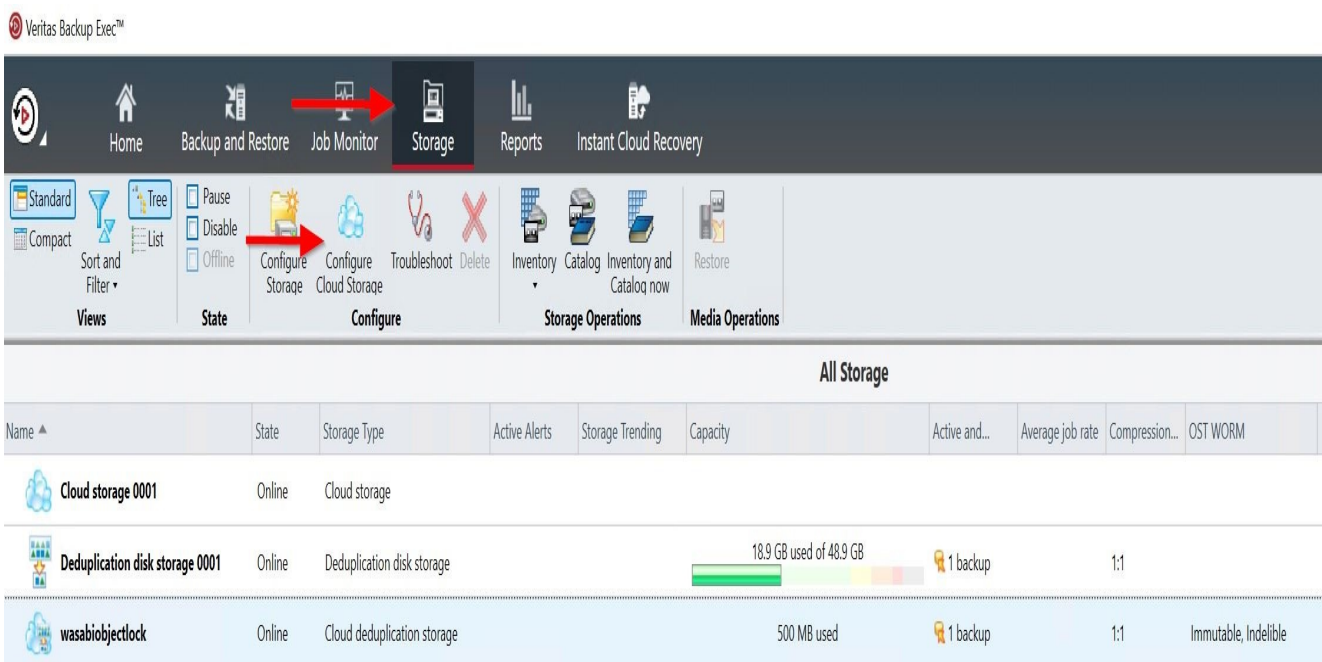
Successful Creation will result in the following:

```
c:\Program Files\Veritas\Backup Exec>set MSDPC_ACCESS_KEY=
c:\Program Files\Veritas\Backup Exec>set MSDPC_SECRET_KEY=
c:\Program Files\Veritas\Backup Exec>set MSDPC_PROVIDER=wasabi
c:\Program Files\Veritas\Backup Exec>set MSDPC_ENDPOINT=s3.us-east-2.wasabisys.com
c:\Program Files\Veritas\Backup Exec>set MSDPC_REGION=us-east-2
c:\Program Files\Veritas\Backup Exec>msdpclutil.exe create --bucket jdb-veritasbackup-objectlock --volume wasabiol --mode COMPLIANCE --min 1D --max 2D --live 2023-06-23
Volume: wasabiol in bucket: jdb-veritasbackup-objectlock is created successfully
c:\Program Files\Veritas\Backup Exec>
```

5.6 You can log into your Wasabi Console and verify that the Bucket and Volume were created as well.



5.7 Go to the Backup Exec Console and click on "Storage" and then click on "Configure Cloud Storage".




5.8 On the configuration screen input the name of the Volume that you created in the steps above.


What name and description do you want to use for the cloud storage device?

Name:

Description:

- Enable deduplication to cloud storage
- Enable encryption
- I want to import an existing Cloud Deduplication Storage


 Refer to the Backup Exec Administrator's Guide before you create the Cloud Deduplication Storage or you can also refer to the following [technote](#)

 To create Write Once, Read Many (WORM) enabled backup sets on Amazon S3 cloud storage, refer to the following [technote](#)


Next >


Cancel


Which provider for the cloud storage device do you want to use?

 Azure

 S3

 Some cloud storage providers require encryption to be enabled when backup jobs or duplicate jobs are targeted to cloud storage. For details about why you should encrypt backup data when targeting jobs to cloud storage, see the technote: [000095780](#)

 The Verify option is disabled by default for backups targeted to cloud devices as cloud storage providers may charge for reading data from the cloud during verification. To enable the option, go to the Verify tab and select the appropriate option to verify data. If you retarget existing backup jobs to cloud storage, ensure that the verify option is not enabled. Backup Exec complies with data integrity mechanisms for cloud transfer. For more information refer to the technote: [000108140](#)

 To add a new S3 cloud instance using the Generic S3 Configurator tool, click [here](#)

[What do I need to configure to use cloud storage?](#)

< Back

Next >

Cancel

5.12 Select "Wasabi" from the Cloud Storage Dropdown menu

5.13 Select your Wasabi Logon credentials that you made in Section 2 Steps 7-9.

5.14 Click on "Next"

What is the connection information for the cloud storage device?

Cloud storage:

Logon account:



It is recommended that you select or create a logon account that is used exclusively for the cloud device. The account should not be used for any other purpose and should not contain credentials that are subject to password update policies.

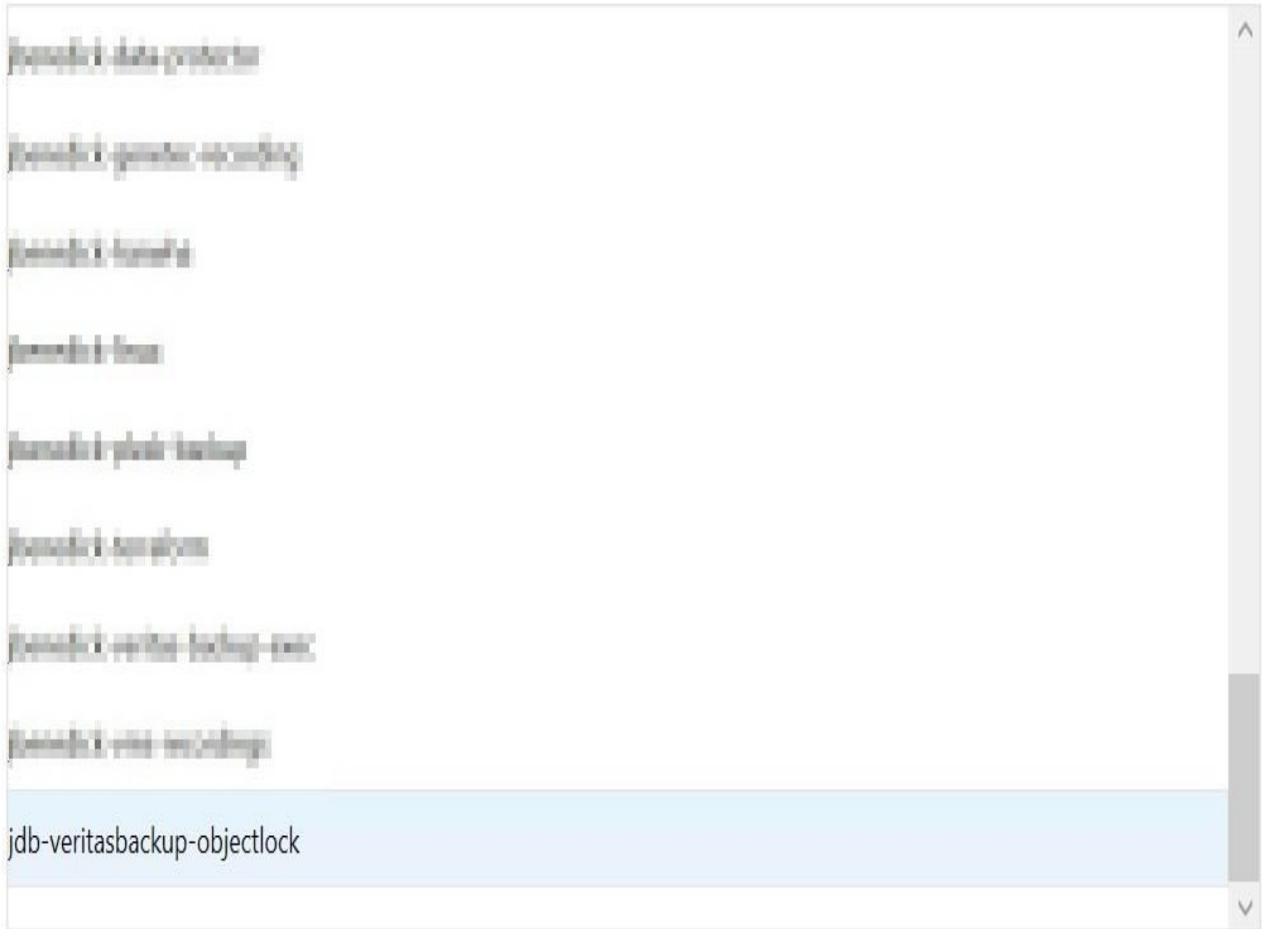
< Back

Next >

Cancel

5.15 Choose the bucket in the list you created from the previous steps and click on "Next"

Which logical storage unit do you want to use?



A scrollable list of logical storage units. The units listed are: jsmo-ik-data-protection, jsmo-ik-guest-recording, jsmo-ik-iso, jsmo-ik-iso, jsmo-ik-iso, jsmo-ik-iso, jsmo-ik-iso, jsmo-ik-iso, jsmo-ik-iso, jsmo-ik-iso, jsmo-ik-iso, jdb-veritasbackup-objectlock. The 'jdb-veritasbackup-objectlock' unit is highlighted with a light blue background. A vertical scrollbar is on the right side of the list.



Three buttons for navigation: '< Back', 'Next >', and 'Cancel'. The 'Next >' button is highlighted with a blue border.

5.16 Select how many concurrent operations you wish to have and click "Next"

How many concurrent operations do you want to let run at the same time on this cloud storage device?

Concurrent operations:



This setting determines how many jobs can run at the same time on this device. The number of jobs that this device can handle varies depending on your hardware and environment, so you may need to adjust this setting later. It is recommended that you set it low enough to avoid overloading your system, but high enough to process your jobs in a timely manner.

< Back

Next >

Cancel

5.17 Review your settings and then click on "Finish"

Storage configuration summary

Name and description for the cloud storage device	
Name:	wasabiol
Description:	
Encryption details	
Encryption enabled:	No
Provider name	
Cloud provider name:	S3
Connection information	
Cloud server name:	wasabi:wasabi.com
Logon account:	wasabi
Bucket / Storage container	
Storage location:	jdb-veritasbackup-objectlock
Number of concurrent operations allowed	
Concurrent operations:	2

5.18 Next you can follow the steps listed in Section 4 for Creating a backup job and select your Object lock Cloud Storage to backup to.

Appendix - Adding Support for Wasabi

In order to use Wasabi with Backup Exec v22, two files - **CloudProvider.xml** and **CloudConnectorCfg.xml** need to be downloaded and applied to the Backup Exec server. This configuration will provide Wasabi as a dropdown option.

Please follow the steps included in the Veritas [technote](#) to apply these xml files.